

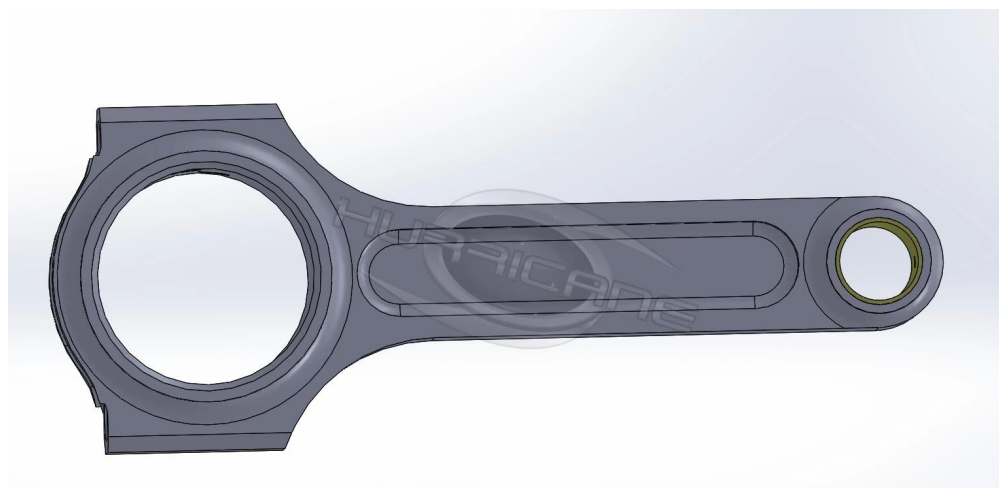
Brand: Hurricane  
Engine: VW Audi Jetta Golf 2.0L ABA  
Part Type: Connecting Rods  
Center to Center Length: 159mm/6.260"  
Big End Bore Diameter: 50.60mm/1.992"  
Big End Width: 24.90mm/0.980"  
Small End Bore Diameter: 22mm /0.866"  
Small End Width: 24.90mm/0.980"  
Beam Style: I-beam  
Connecting Rod Bolt Diameter: 3/8"  
Quantity :4 pieces per set  
Approximate Connecting Rod Weight: 620g/piece  
Advertised Horsepower Rating: 800hp  
Material: Forged 4340 steel  
Connecting Rod Finish: Shot-peened, Polished  
Pin: Bronze wrist pin bushings  
Wrist Pin Style: Floating  
Cap Retention Style: Cap screw  
Weight Matched Set: Yes ,Balanced +/- 1g  
Magnafluxed: Yes  
Private Label: Yes ,available  
Custom design: Yes, accept

## Volkswagen 2.0L ABA & ABF 159mm Connecting Rod Description

The set of 4 VW 2.0L ABA I-beam steel connecting rods 159mm as a hot sell rod model in our factory , each rod forged from high quality 4340 steel , it is available with 20mm , 21mm and 22mm pin size . Per rod 100% finished by advanced CNC machine , all of them heat-treated, stress-relieved, shot-peened, and magnafluxed to achieve high durability. Per set weight matched to +/- 1 grams .

VW 6.620 inch forged 4340 steel connecting rods with 22mm pin finished with I-beam shape to handle higher horsepower , the small end bore and big end bore honed with tight tolerance to meet high technical standard .

Hurricane I-Beam Connecting Rods For VW ABA 2.0 8V ABF 16V 159mm Length designed and tested by 3D software



The final finished I Beam Forged Connecting Rod Set For VW ABA 2.0L Engine have smooth and beautiful appearance, no any tool marks.





Welcome to [contact us](#) for your VW engine needs , Hurricane can make perfect rods for your different requirements.

## VW 2.0 16V Engine Picture



Note: Picture from Pinterest.