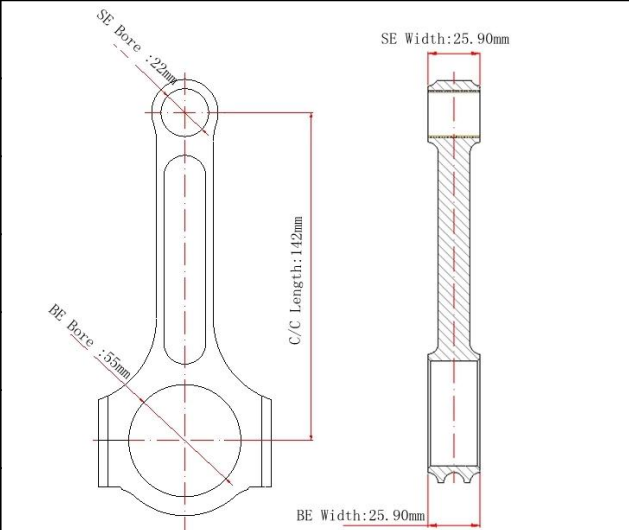


Toyota 2jzgte Connecting Rods Main Sizes

Brand: Hurricane	
Center to Center Length: 142mm/5.590"	
Big End Bore Diameter: 55mm/2.165"	
Big End Width: 25.9mm/1.012"	
Small End Bore Diameter: 22mm /0.866"	
Small End Width: 25.9mm/1.012"	
Beam Style: I-beam	

Toyota 2jz I-beam Conrods Set Features

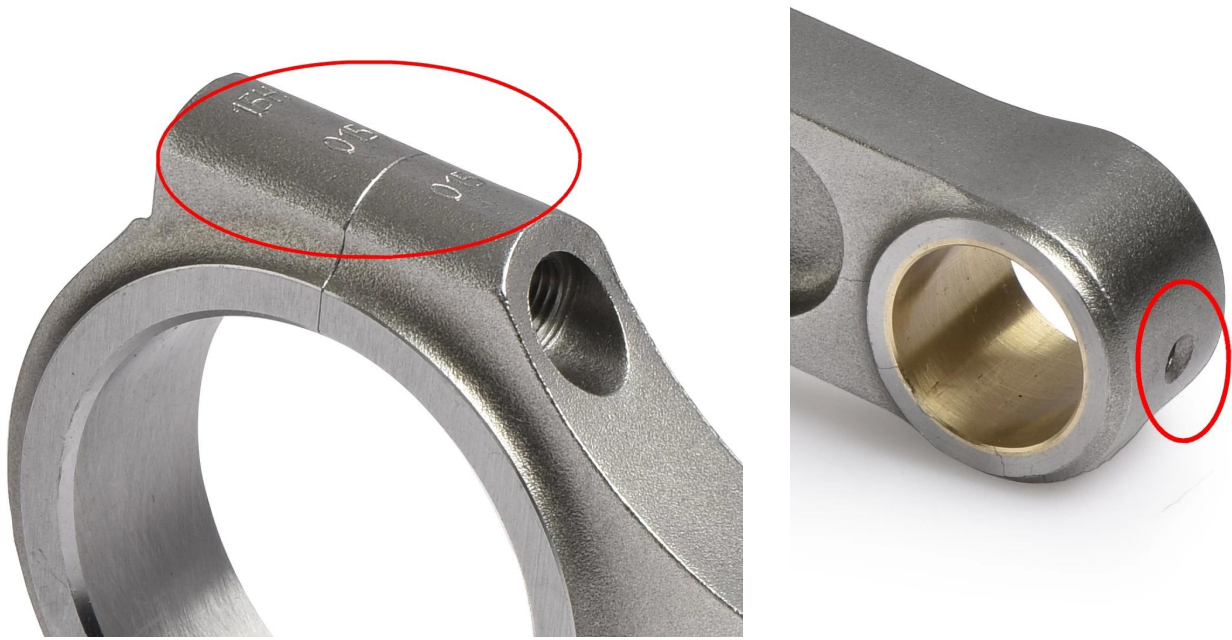
Connecting Rod Bolt Diameter	3/8 "
Approximate Connecting Rod Weight	xxx
Advertised Horsepower Rating	1000hp
Quantity	Sold as 6 pieces per set
Material	Forged 4340 steel
Connecting Rod Finish	Shot-peened, Polished
Pin	Bronze wrist pin bushings
Wrist Pin Style	Floating
Cap Retention Style	Cap screw
Weight Matched Set	Yes, Balanced +/- 1g
Magnafluxed	Yes
Private Label	Yes, available
Custom design	Yes, accept

I-Beam Connection Rod Set Toyota 2JZ-GTE Description

Toyota 2JZGTE forged connecting rods made from high tensile [4340 steel material](#), precision-machined and fully inspected in Hurricane factory, each rod bronze wrist pin bushings installed for increased wear resistance, featured with round shoulder and one oil hole at their small ends to provide additional lubrication and cooling, straight I-beam construction to offer more strength for high horsepower 2jzgte applications; what's more, per rod 100% finished by advanced CNC machine to ensure biggest strength and durability, any way, they will be a good choice for your high performance Toyota 2jzgte racing vehicles.

Round Shoulder

Oil Hole



Note : Various shoulder design is available, you are welcome to [click here](#) to look at more shoulder design details .

Hurricane 2JZGTE forged steel connecting rods Applications:

Make	Vehicle Model	Vehicle Group	Engine
Toyota / Lexus	Supra MKIV	Supra TT MK4 93-98 JZA80 Supra NT MK4 93-98 JZA80 SC300/Soarer 92-00 Z30 IS300 01-05 XE10 GS300/Aristo 91-97 S140 GS300/Aristo 98-05 S160	2JZ-GE 2JZ-GE VVTi 2JZ-GTE 2JZ-GTE VVTi

Any question for this product, please feel free to [contact us](#)!

The Process Of Custom Conrods

Custom Rods are available in Hurricane factory, If we OEM your style of connecting Rod, please follow the steps as below:

- 1) Hurricane received the detailed drawing or used sample, then we make quote detail
- 2) if you agree our quote, then we design drawing
- 3) each other confirm the drawing and deal details
- 4) all confirm finished, 30% deposit required, then we make sample for you to test if necessary.
- 5) balance payment with freight cost before shipping, then we arrange shipping by your forwarder or our forwarder.

If the detailed drawing or used sample is unavailable, you can fill in our online custom order form [custom connecting rod order form](#) to send the main dimensions for us to check first.

Toyota Supra Race Car



Note: Picture from Pinterest.