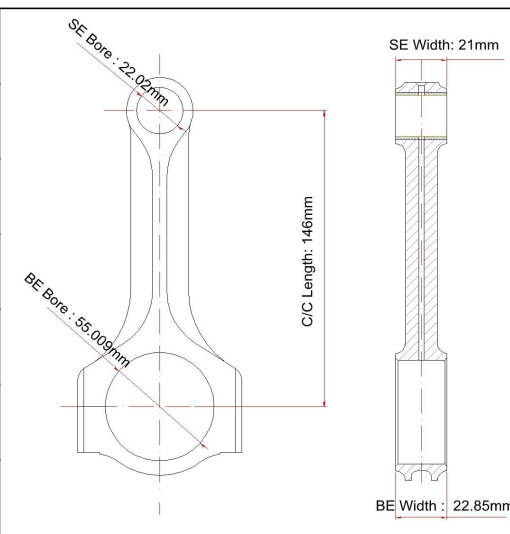


Toyota 1UZFE Forged Connecting Rods Main Sizes

Brand: Hurricane	
Center to Center Length: 146mm/5.748"	
Big End Bore Diameter: 55.009mm/2.166"	
Big End Width: 22.85mm/0.899"	
Small End Bore Diameter: 22.02mm /0.867"	
Small End Width: 21mm/0.827"	
Beam Style: X-beam	

Toyota 146mm Engine Connecting Rod Features

Connecting Rod Bolt Diameter	3/8 "
Approximate Connecting Rod Weight	xxx
Advertised Horsepower Rating	1000hp
Quantity	Sold as 8 pieces /set
Material	Forged 4340 steel
Connecting Rod Finish	Shot-peened, Polished
Pin	Bronze wrist pin bushings
Wrist Pin Style	Floating
Cap Retention Style	Cap screw
Weight Matched Set	Yes ,Balanced +/- 1g
Magnafluxed	Yes
Private Label	Yes ,available
Custom design	Yes, accept

Toyota 1UZFE 146mm X-Beam Connecting Rods Description

Toyota 1uzfe X-beam shape forged rods manufactured from 4340 steel for high durability, 100% **CNC machined**, bronze bushed for floating piston pin, heat-treated to rate 34-38HRC , and honed to meet high tolerance standard . Balance weighted sets with end to end +/- 1 gram, and are available to come standard with **ARP 2000 bolts rated at 220000 psi tensile strength and Hurricane Copy ARP2000 bolts with 211829psi tensile strength** .

In addition , each 1uzfe X-beam con rod polished and shot-peened after machining to improve fatigue life, also help to make the rod's appearance look more smooth and beautiful.



Note : The Toyota 1UZFE H-beam polished picture offered for reference .

1UZFE V8 Engines 4340 Steel Rod Set Applications

1989-2000 Lexus LS 400/Toyota Celsior[6]
1989-2002 Toyota Crown/Toyota Crown Majesta
1989-2004 Toyota HiAce HiMedic Ambulance (Japan only)
1991-2000 Lexus SC 400/Toyota Soarer[6]
1992-2000 Lexus GS 400/Toyota Aristo[6]
1995-1997 SARD MC8/MC8-R

The Process Of Custom Conrods

Hurricane team has 17+ years' experience designing and manufacturing high performance racing connecting rods for professional racing engines and demanding race applications. So custom connecting

rods can be ordered, such as big end bore diameters , pin diameters , center-to-center rod lengths and others specs . Welcome to send us your drawing or sample , let's produce a perfect racing rods for your race applications .

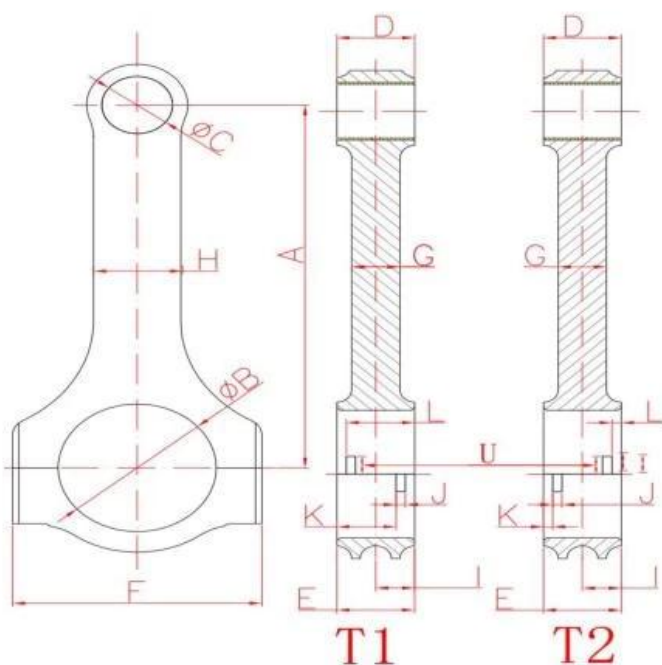
If we OEM your style of connecting Rod , please follow the steps as below:

- 1) received the drawing or sample or the full specs of your rods([Custom Connecting Rod Form](#)) , then we make quote detail
- 2) if you agree our quote , then we design drawing
- 3) each other confirm the drawing and deal detail
- 4) all confirm finished , 30% deposit required , then we make sample for you to test if necessary
- 5) balance before shipping , then we arrange shipping by your forwarder or our forwarder in time once received payment .



Hurricane Speed&Performance - Custom Connecting Rod Form

SPECIFY UNITS : _____ MM OR IN



A. _____ Center to Center length/中心距
 B. _____ Big End Bore/大孔
 C. _____ Pin End Bore/小孔
 D. _____ Pin End Width/小端厚度
 E. _____ Big End Width/大端厚度
 F. _____ Overall BE Width/肩宽
 G. _____ Beam Thickness/杆厚
 H. _____ Beam Width/杆宽
 I. _____ BE Offset
 J. _____ T1 Or T2 反瓦/正瓦
 K. _____ Tang Position
 L. _____ Tang Width/瓦槽宽度
 M. _____ Tang Depth/瓦槽深度
 N. _____ Tang Position
 O. _____ Tang Length/瓦槽长度
 P. _____ H-beam, X-beam, I-beam/设计
 Q. _____ Piece/Set 支/组
 R. _____ Engine Model /发动机型号
 S. _____ Bolt Diameter(Inch) /螺栓规格
 T. _____ Bolt Length(Inch) 螺栓长度
 U. _____ Piece (Quantity)/数量

