

SB Chevy 5.700/2.225/.928Pin Connecting Rods Main Sizes

Brand: Hurricane	
Center to Center Length: 144.78mm/5.700"	
Big End Bore Diameter: 56.52mm/2.225"	
Big End Width: 23.92mm/0.942"	
Small End Bore Diameter: 23.56mm /0.928"	
Small End Width: 26.95mm/1.061"	
Beam Style: H-beam	

sbc 5.7 connecting rods more details

Connecting Rod Bolt Diameter	7/16"
Approximate Connecting Rod Weight	~g
Advertised Horsepower Rating	1000hp
Quantity	Sold as 8 pieces /set
Material	Forged 4340 steel
Connecting Rod Finish	Shot-peened, Polished
Pin	Bronze wrist pin bushings
Wrist Pin Style	Floating
Cap Retention Style	Cap screw
Weight Matched Set	Yes ,Balanced +/- 1g
Magnafluxed	Yes
Private Label	Yes ,available
Custom design	Yes, accept

Small block chevy connecting rods features



1. All rods bushings are made from Aluminum-silicon-bronze alloy providing integrity and reliability, manufactured from QAL10-3-1.5, main chemistry:

Al (Aluminum): 8.5-10.0

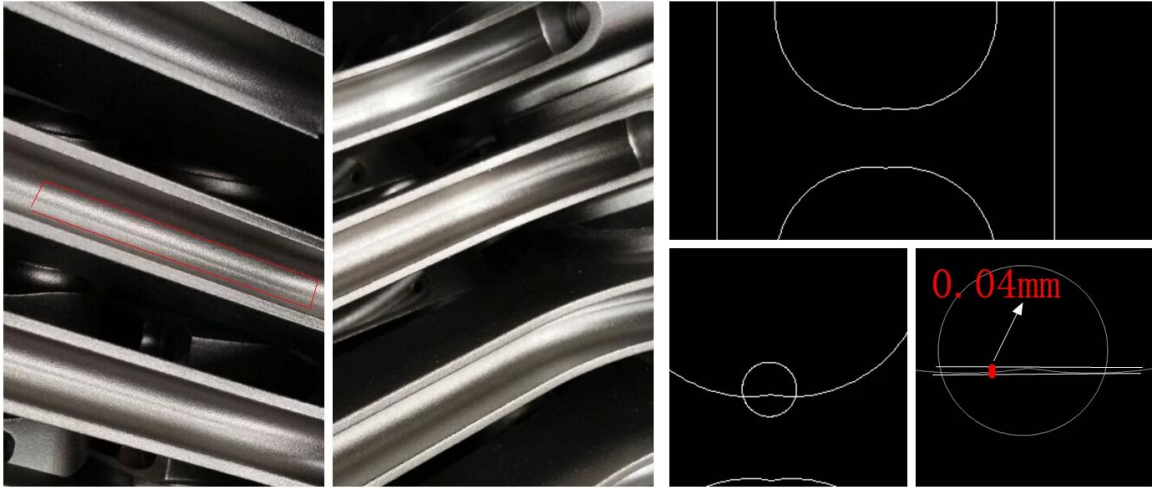
MN (Manganese): 1 -2,0

Fe (IRON): 2.0-4.0

Cu (bronze)



2. New crafts H beam shown. Compared with old crafts, This efficiency has allowed us to offer this part at a significantly lower price with high power than market widely accepted H beam.



3. Extended shoulder strength at joining rods and caps with Bolt. Full fillet intersection of bolt spot face and interior gusset surface.

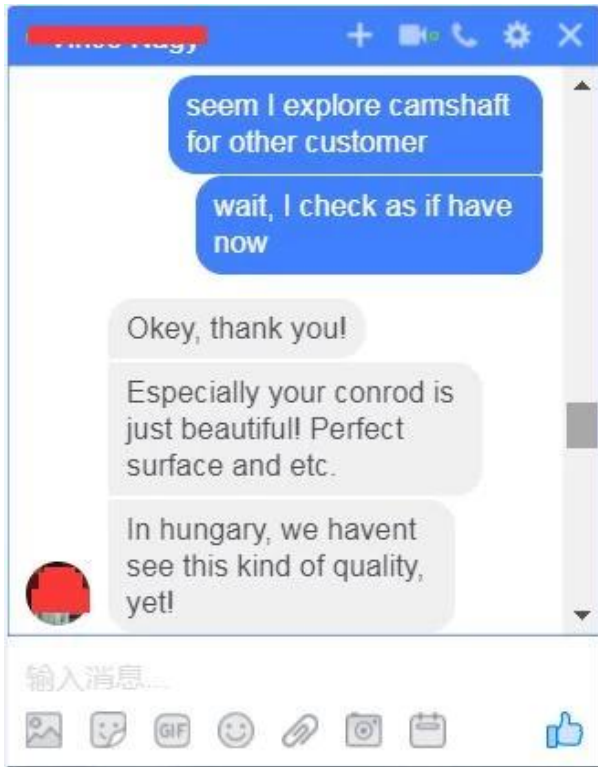


4. Besides ARP2000 bolt, Custom Age 625 cap screws by ARP are available for extremely demanding applications.



More design will show you in [connecting rods gallery](#) soon!

Customer Feedback of Hurricane Conrods



Note:Feedback is for [VW 1.9L TDI 144mm Rods](#)