

Brand: Hurricane
Engine: Chevy 283/327
Part type: Connecting Rods
Center to center length: 152.40mm/6.000 "
Big End bore Diameter: 53.98mm/2.125 "
Big end Width: 23.90 mm/0.941 "
Small end bore Diameter: 23.55 mm/0.927 "
Small end width: 26.95 mm/1.061 "
Beam style: H-Beam
Connecting rod bolt Diameter: 7/16 "
Quantity: 8pcs/Set
Approximate connecting rod Weight: 630/Piece
Advertised horsepower rating: 1000hp
Material: Forged 4340 Steel
Connecting rod finish: Shot-peened, polished
Pin: Bronze Wrist pine Bushings
Wrist pin Style: floating
Cape Town retention style: Cap Screw
Weight matched set: Yes, balanced +/-1 g
Magnafluxed: Yes
Private Label: Yes, available
Custom design: Yes, accept

These steel H-beam rods fit for Chevy sbc engines , straight H-beam design can save weight and more lighter than I-beam .

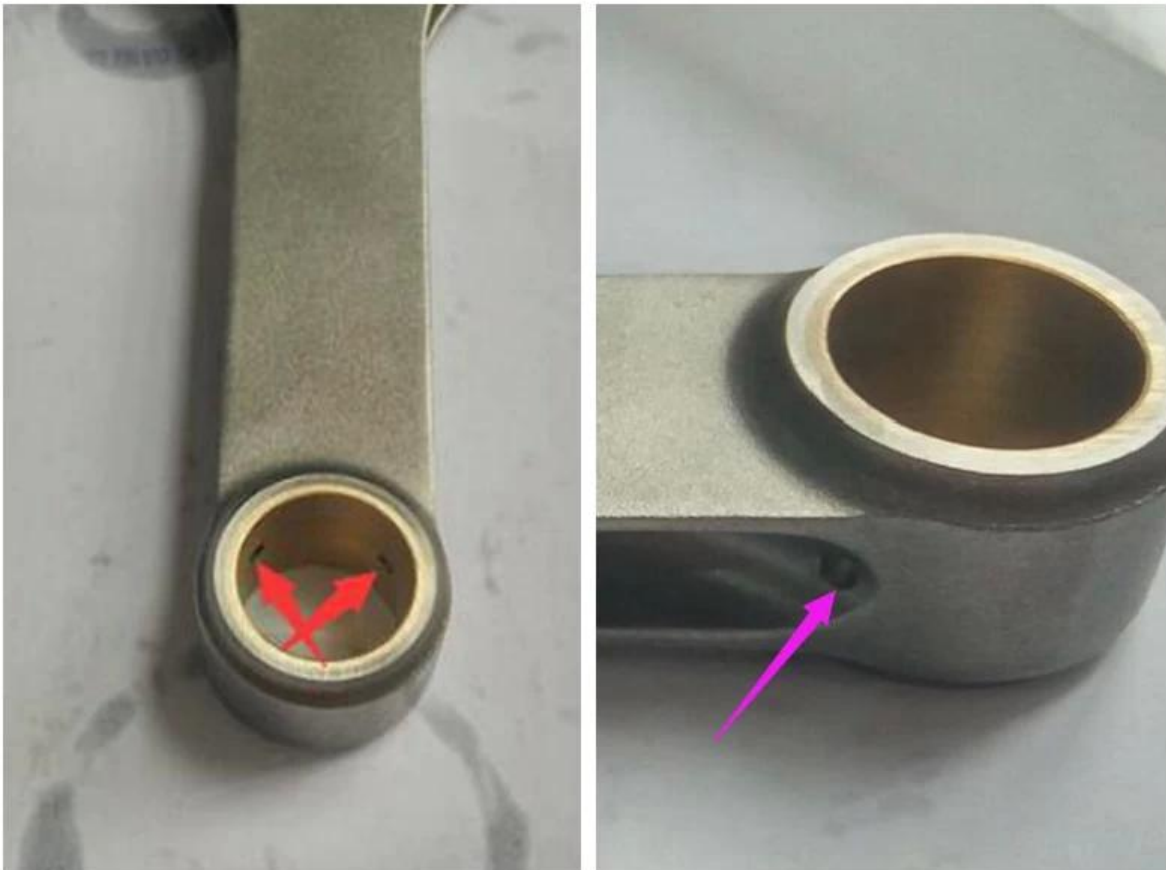
Each rod is heat treated with 34-38HRC, shot peened and magnafluxed for high strength and durability, weight matched sets ± 1 gram.



All small end installed high quality bronze bushing to provide wear resistance for floating pistons .



Double oil holes drilled into the small end of the rod for providing positive lubrication of the small end .



Hurricane offer custom service too, here is the steps for [custom connecting rods](#):

- 1). Customer offer detailed drawing or [detailed dimensions](#) , or sample ,then we make quote detail.
- 2). If customer agree our quotation , then we start to design drawing .
- 3). Each other confirm the drawing and order details .
- 4). All details confirmed ,30% deposit
payment to confirm order , then we make sample to test if necessary , or start bulk production directly .
- 5). Balance payment before shipping , then we arrange shipment and provide tracking number or way of bill .

Any further question , please feel free contact us online or email to marketing@hurricane-rod.com.cn .