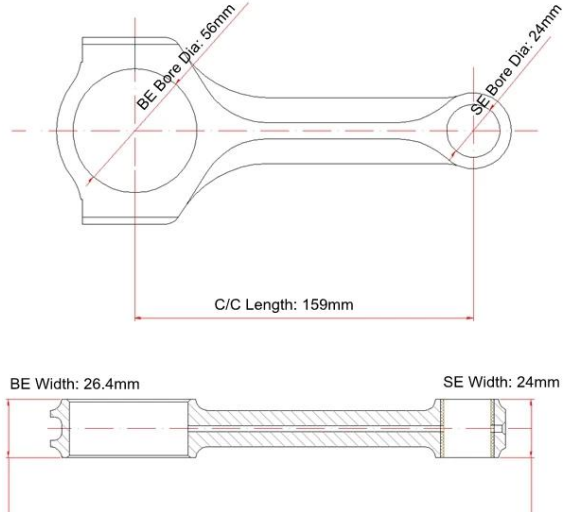


Saab B205 X-beam Connecting Rods Main Sizes

Brand: Hurricane	
Center to Center Length: 159mm/6.260"	
Big End Bore Diameter: 56mm/2.205"	
Big End Width: 26.4mm/1.039"	
Small End Bore Diameter: 24mm /0.945"	
Small End Width: 24mm/0.866"	
Beam Style: X-beam	

Saab X-beam Connecting Rods More Features

Connecting Rod Bolt Diameter	3/8 "
Approximate Connecting Rod Weight	XXX
Advertised Horsepower Rating	600hp
Quantity	Sold as 4 pieces /set
Material	Forged 4340 steel
Connecting Rod Finish	Shot-peened, Polished
Pin	Bronze wrist pin bushings
Wrist Pin Style	Floating
Cap Retention Style	Cap screw
Weight Matched Set	Yes ,Balanced +/- 1g
Magnafluxed	Yes
Private Label	Yes ,available
Custom design	Yes, accept

Additional Description :

1. All process finished at Hurricane in China
2. Heat treatment: 34-38HRC

3. Designed and processed by CNC machine
4. All big and small ends honed in SUNNEN honing machine
5. Suits for [Standard ARP 2000 bolts](#)
6. Magnaflux and dimensionally Inspected
7. Shot peened and stress relieved
8. Lasering private label service provided



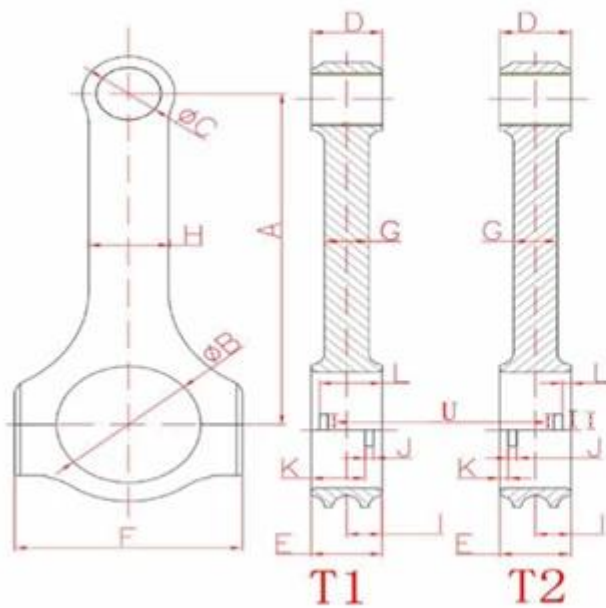
Hurricane also produce connecting rods based on specified dimensions or used sample or detailed drawing , if you want to do [custom connecting rods](#) or oversize connecting rods ,welcome to send inq

uiry for Hurricane !



Hurricane Speed & Performance - Custom Connecting Rod Form

SPECIEF UNITS: _____ MM OR IN



A. _____	B. _____
Center to Center length/中心距	Big End Bore/大孔
C. _____	D. _____
Pin End Bore/小孔	Pin End Width/小端厚度
E. _____	F. _____
Big End Width/大端厚度	Overall BE Width/肩宽
G. _____	H. _____
Beam Thickness/杆厚	Beam Width/杆宽
I. _____	S. _____
BE Offset	T1 Or T2 反瓦/正瓦
K. _____	J. _____
Tang Position	Tang Width/瓦槽宽度
V. _____	L. _____
Tang Depth/瓦槽深度	Tang Position
U. _____	M. _____
Tang Length/瓦槽长度	H-beam,X-beam,I-beam/设计
O. _____	N. _____
Piece/Set 只/组	Engine Model/发动机型号
P. _____	Q. _____
Bolt Diameter(Inch)/螺栓规格	Piece (Quantity)/数量
R. _____	
Bolt Length(Inch)/螺栓长度	

