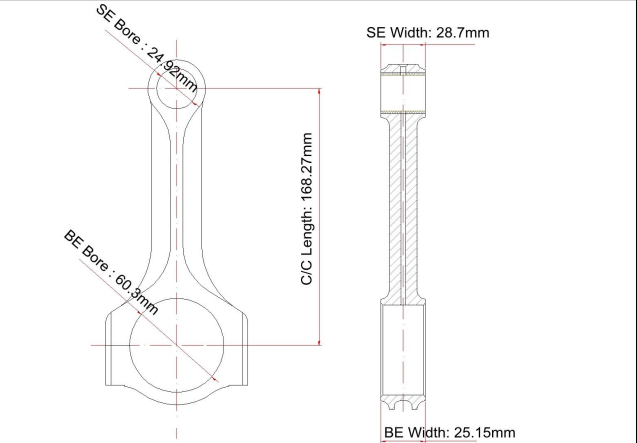


# Pontiac 455 X-beam Connecting Rods Main Sizes

Brand: Hurricane	
Center to Center Length: 168.27mm/6.625"	
Big End Bore Diameter: 60.3mm/2.374"	
Big End Width: 25.15mm/0.990"	
Small End Bore Diameter: 24.92mm /0.981"	
Small End Width: 28.7mm/1.130"	
Beam Style: X-beam	

## Pontiac 455 X-beam Connecting Rods Features

Connecting Rod Bolt Diameter	7/16 "
Approximate Connecting Rod Weight	xxx
Advertised Horsepower Rating	1000hp
Quantity	Sold as 8 pieces /set
Material	Forged 4340 steel
Connecting Rod Finish	Shot-peened, Polished
Pin	Bronze wrist pin bushings
Wrist Pin Style	Floating
Cap Retention Style	Cap screw
Weight Matched Set	Yes ,Balanced +/- 1g
Magnafluxed	Yes
Private Label	Yes ,available
Custom design	Yes, accept

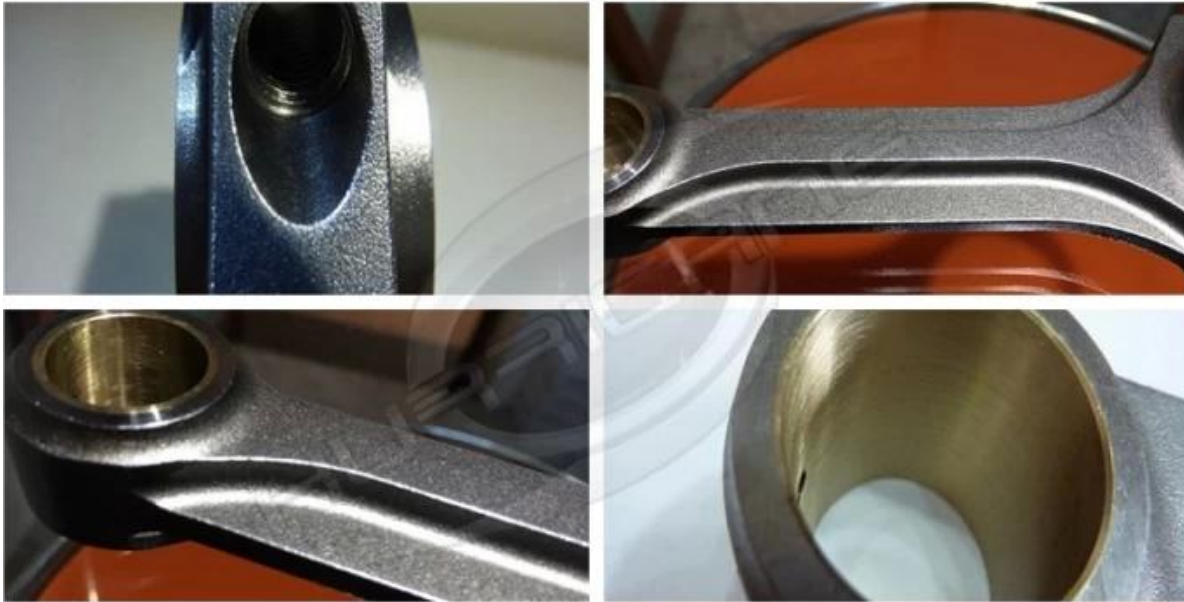
## Pontiac 455 Connecting Rods Description

Hurricane manufacture and supply racing connecting rods for 20 years now , and insist researching techniques and improving product's performance and strength.

At present, Hurricane have ability to design and provide [various beam style connecting rods](#) , include H-beam , I-beam , X-beam , A-beam , etc.

For Pontiac 455 applications , Hurricane provides H-beam and I-beam , the X-beam rods are under developing now . These X-beam rods forged from certified 4340 aircraft quality steel , X-beam shape combines weight and strength to handle high horsepower applications . Per rod is 100% CNC machined on the advanced equipment to secure enough strength . Fully stress relieved and shot peened to improve fatigue life. The rods cap fitted with high quality dowels to achieve bearing caps precisely aligned, small end installed high quality bronze bushed for floating pins, 7/16" [ARP 2000 capscrew fasteners](#) to secure the caps.

X-beam connecting rod picture



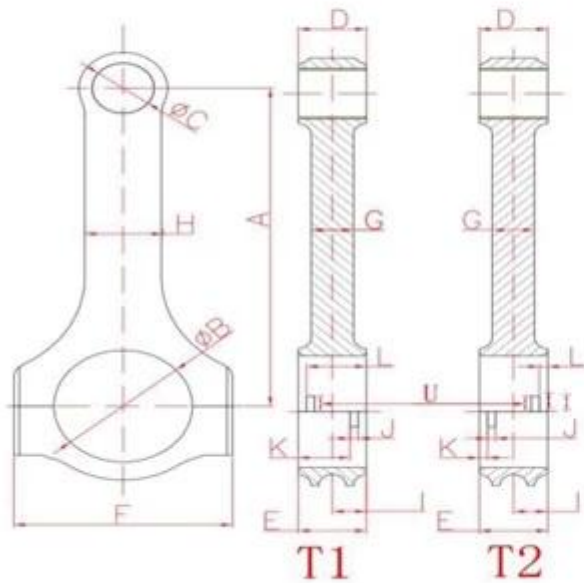
Hurricane workshop picture : all the connecting rods ranked neatly on the shelves to avoid surface damaging .



Hurricane provides [custom service](#) too , include custom specifications , custom design , custom logo and custom packing boxes .



## Hurricane Speed&Performance - Custom Connecting Rod Form



SPECIFY UNITS : \_\_\_\_\_ MM OR IN

A. _____	B. _____
Center to Center length/中心距	Big End Bore/大孔
C. _____	D. _____
Pin End Bore/小孔	Pin End Width/小端厚度
E. _____	F. _____
Big End Width/大端厚度	Overall BE Width/肩宽
G. _____	H. _____
Beam Thickness/杆厚	Beam Width/杆宽
I. _____	S. _____
BE Offset	T1 Or T2 反瓦/正瓦
K. _____	J. _____
Tang Position	Tang Width/瓦槽宽度
V. _____	L. _____
Tang Depth/瓦槽深度	Tang Position
U. _____	M. _____
Tang Length/瓦槽长度	H-beam, X-bea, I-beam/设计
O. _____	N. _____
Piece/Set 支/组	Engine Model /发动机型号
P. _____	Q. _____
Bolt Diameter(Inch) /螺栓规格	Piece ( Quantity)/数量
R. _____	
Bolt Length(Inch) 螺栓长度	



Welcome to [contact us](#) if any needs for custom service .