

Chevy Big Block V8 Connecting Rods Main Sizes

Brand: Hurricane	
Center to Center Length: 162.18mm/6.385"	
Big End Bore Diameter: 59.047mm/2.325"	
Big End Width: 25.17mm/0.991"	
Small End Bore Diameter: 25.146mm /0.990"	
Small End Width: 28.70mm/1.130"	
Beam Style: I-beam	

Chevy Big Block V8 Connecting Rods Features

Connecting Rod Bolt Diameter	7/16 "
Approximate Connecting Rod Weight	xxx
Advertised Horsepower Rating	1000+hp
Quantity	Sold as 8 pieces /set
Material	Forged 4340 steel
Connecting Rod Finish	Shot-peened, Polished
Pin	Bronze wrist pin bushings
Wrist Pin Style	Floating
Cap Retention Style	Cap screw
Weight Matched Set	Yes ,Balanced +/- 1g
Magnafluxed	Yes
Private Label	Yes ,available
Custom design	Yes, accept

Per bbc connecting rod machined from quality 4340 steel material , per rod designed and tested by 3D software before production , and then 100% engineered by advanced CNC equipments , each rod shot peened for added fatigue life and honed to meet high tolerance standard.



After finished all production processes , all rods will be weight matched sets +/- 1 grams to keep balance well .

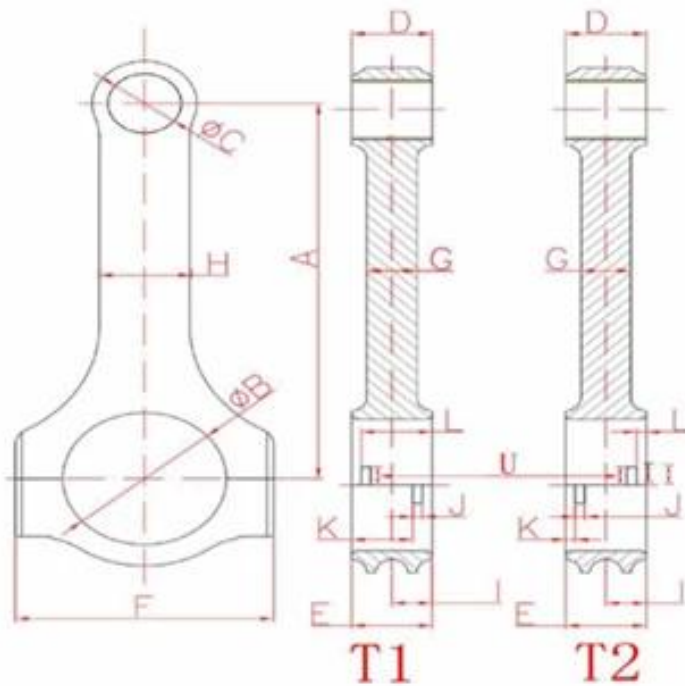


Hurricane also provide various Center to Center length connecting rods for SBC and BBC applications , include 6.100" , 6.123" , 6.125" , 6.200" , 6.135" 6.385" , 6.760" ,6.800" etc . In addition, [custom or special connecting rods](#) could be produced as long as sample, drawing or detailed specifications provided .



Hurricane Speed & Performance - Custom Connecting Rod Form

SPECIEF UNITS: _____ MM OR IN



- | | |
|-----------------------------|-------------------------|
| A _____ | B. _____ |
| Center to Center length/中心距 | Big End Bore/大孔 |
| C _____ | D. _____ |
| Pin End Bore/小孔 | Pin End Width/小轴厚度 |
| E _____ | F. _____ |
| Big End Width/大轴厚度 | Overall BE Width/肩宽 |
| G _____ | H. _____ |
| Beam Thickness/杆厚 | Beam Width/杆宽 |
| I _____ | S. _____ |
| BE Offset | T1 Or T2 反瓦/正瓦 |
| K _____ | J. _____ |
| Tang Position | Tang Width/瓦槽宽度 |
| V _____ | L. _____ |
| Tang Depth/瓦槽深度 | Tang Position |
| U _____ | M. _____ |
| Tang Length/瓦槽长度 | H-beam,X-beam,I-beam/设计 |
| O _____ | N. _____ |
| Piece/Set 只/组 | Engine Model/发动机型号 |
| P _____ | Q. _____ |
| Bolt Diameter(Inch)/螺栓规格 | Piece (Quantity)数量 |
| R _____ | |
| Bolt Length(Inch)螺栓长度 | |



If you can not find what you need on our websites or any needs for custom connecting rods, please feel free [contact](#) us .