

Hurricane Speed and Performance J35 X-Beam Connecting Rods

Brand: Hurricane	
Center to Center Length: 158.5mm/6.240"	
Big End Bore Diameter: 58.009mm/2.284"	
Big End Width: 18.80mm/0.740"	
Small End Bore Diameter: 22.005mm/0.866"	
Small End Width: 20.98mm/0.826"	
Beam Style: X-beam	

Custom forged connecting rods. - Honda V6 J35 rods Features

Connecting Rod Bolt Diameter	3/8"
Approximate Connecting Rod Weight	XXX
Advertised Horsepower Rating	800hp
Quantity	Sold as 6 pieces /set
Material	Forged 4340 steel
Connecting Rod Finish	Shot-peened, Polished
Pin	Bronze wrist pin bushings
Wrist Pin Style	Floating
Cap Retention Style	Cap screw
Weight Matched Set	Yes ,Balanced +/- 1g
Magnafluxed	Yes
Private Label	Yes ,available
Custom design	Custom design Yes, accept

J35 Connecting Rods - Hurricanerods.com Description

[4340 Chrome-Moly Connecting Rods](#)

This is unique single rib design: X-beam 4340 chrome-moly forged rods. This rod is available for high performance engines. Overall, this kind of X-beam are designed with the high strength, high quality, excellent finish with racers. If necessary, extra design can be designed on them also, included:

1. Rifle drilled

This feature provides better pin oiling and cooling leading to increased longevity of the whole piston-rod set.



2. Radial Groove Sleeve

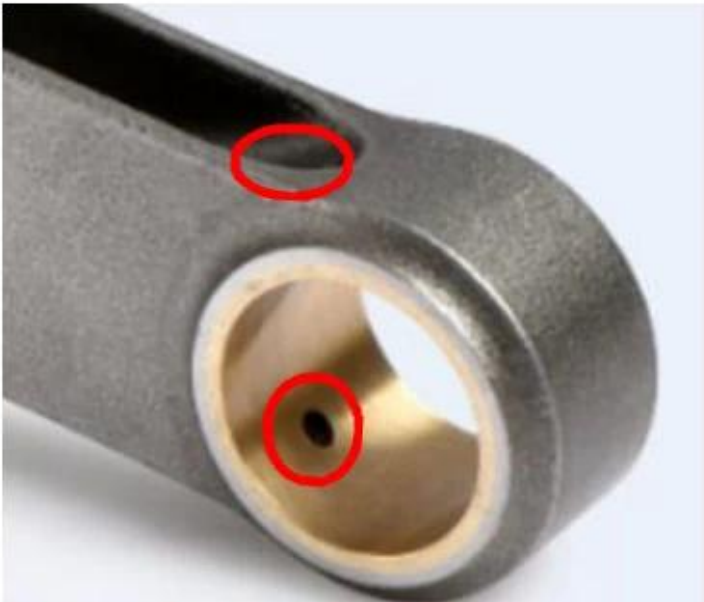
Silicon aluminum bronze rod sleeves with radial groove for oil tank and best pin oiling.



Radial Groove Sleeve

3. Oil Reservoir on PE

Featuring a funnel shape at the top oil hole to provide a better chance to collect oil for the PE lubrication.



double oil reservoir: H-beam



one oil reservoir: I-beam, X-beam

4. Special design on big end

This feature will increase touch area of cap and rods, ensure big end bore ellipticity and repeatability

If you are interested with them or any questions, please feel free to [contact us](#) online or by email: marketing@hurricane-rod.com.cn