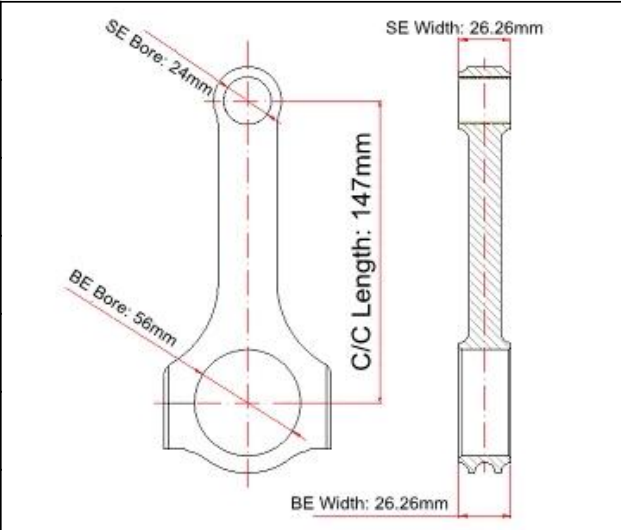


SAAB connecting rods Main Sizes

| | |
|---------------------------------------|--|
| Brand: Hurricane * |  |
| Center to Center Length: 147mm/5.787" | |
| Big End Bore Diameter: 56mm/2.205" | |
| Big End Width: 26.26mm/1.034" | |
| Small End Bore Diameter: 24mm /0.945" | |
| Small End Width: 26.26mm/1.034" | |
| Beam Style: H-beam | |

SAAB 2.3L TURBO H-beam Connecting Rods Features

| | |
|-----------------------------------|-----------------------------------|
| Connecting Rod Bolt Diameter | 3/8" |
| Approximate Connecting Rod Weight | XXXg |
| Advertised Horsepower Rating | 550hp |
| Quantity | Sold as 4 pieces /set |
| Material | Forged 4340 steel |
| Connecting Rod Finish | Shot-peened, Polished |
| Pin | Bronze wrist pin bushings |
| Wrist Pin Style | Floating |
| Cap Retention Style | Cap screw |
| Weight Matched Set | Yes ,Balanced +/- 1g |
| Magnafluxed | Yes |
| Private Label | Yes ,available |
| Custom design | Yes, accept |

SAAB 2.3L TURBO forged conrods Description

Those SAAB 2.3L Turbo H-beam connecting rods are made from forged 4340 Chrome Moly Steel for the highest strength, durability and dedicated for Racing. SAAB connecting rods are designed and processed by CNC machine, Precision alignment sleeves positively locate the rod cap, maintaining big end bore size

and eliminating cap walk. Come with the bronzed bushing suitable for the floating piston pin. All big and small ends are finished with SUNNEN honing machine.



Note: This is our first machining operations, include face milling, grinding the big ends and small ends. You can check more detailed information at: [Hurricane High Performance connecting rods - Process of machining rods](#) Or check our operations at Youtube Video: [How it's made: Connecting rod](#)

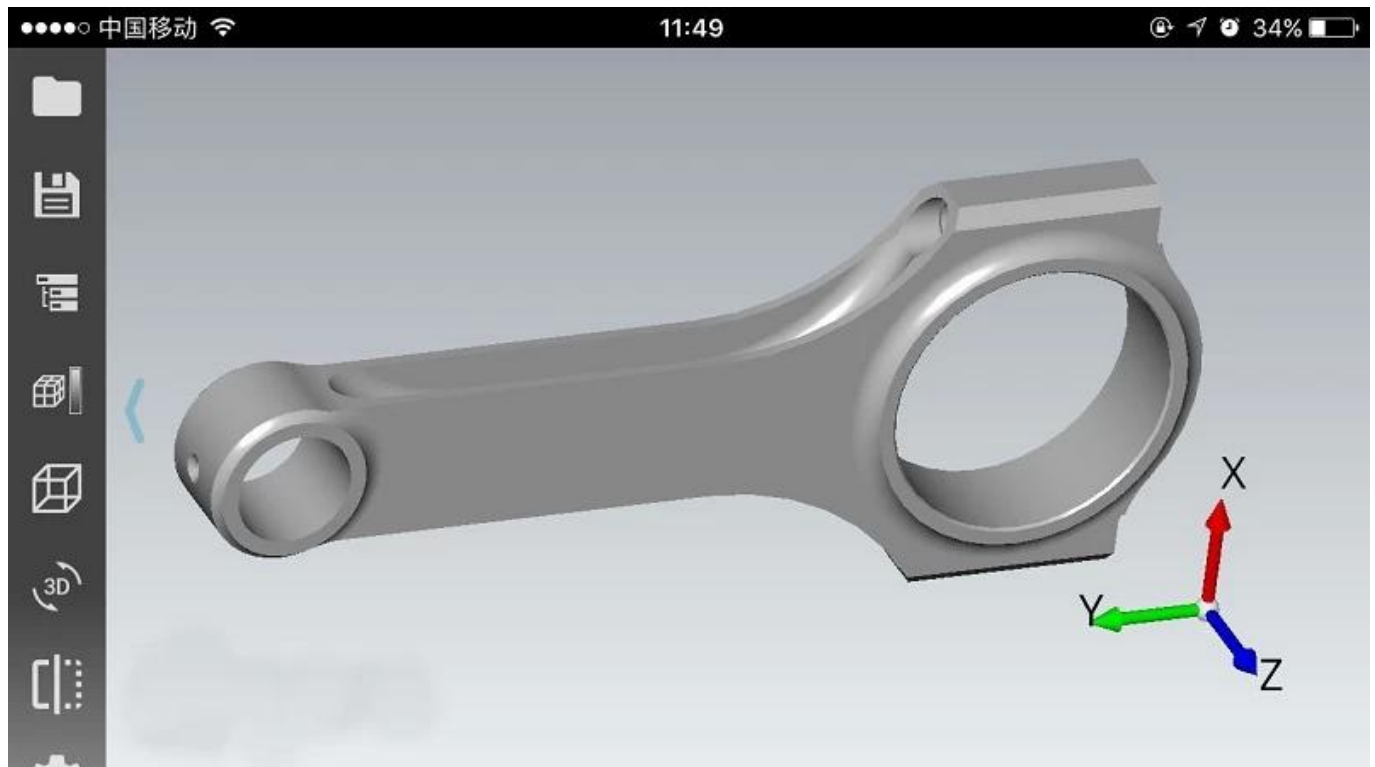
As we all know that the 4340 forged performance connecting rods are quite different compare with OEM factory connecting rods. 4340 rods is more easy revised to reach different customer requirements, from appearance, horsepower and dimensions. Hurricane provide Custom Design service. You can choose designs at those pages:

- 1# [Hurricane Connecting Rods Big End Design](#)
- 2# [Hurricane Connecting Rod Features - Various Beam Designs](#)
- 3# [Hurricane Connecting Rod Shoulder Design](#)

Then Please fill in this form with the required dimensions and send it to our skilled staffs, you will get response within 24 hours.

- 4# [Hurricane Speed & Performance - Custom Connecting Rod Form](#)

h beam connecting rods for SAAB 3D Drawing



Before Order Start, Hurricane can provide 2D CAD Drawing and 3D Drawing for SAAB 2.3L TURBO forged conrods. If you have any questions of this page, products or want to build your own custom connecting rods, please [leave message here directly.](#)