

Brand: Hurricane  
Engine: Honda Acura K24  
Part Type: Connecting Rods  
Center to Center Length: 152.019mm/5.985"  
Big End Bore Diameter: 51.006mm /2.008"  
Big End Width: 19.80mm/0.780"  
Small End Bore Diameter: 21.015mm /0.827"  
Small End Width: 19.80mm/0.780"  
Beam Style: H-beam  
Connecting Rod Bolt Diameter: 3/8 "  
Approximate Connecting Rod Weight: 469gram per piece  
Advertised Horsepower Rating: 600hp  
Quantity: Sold as 4 pieces per set  
Material: Forged 4340 steel  
Connecting Rod Finish: Shot-peened, Polished  
Pin: Bronze wrist pin bushings  
Wrist Pin Style: Floating  
Cap Retention Style: Cap screw  
Weight Matched Set: Yes ,Balanced +/- 1g  
Magnafluxed: Yes  
Private Label: Yes, available  
Custom design: Yes, accept

## Honda K24 5.985" H beam connecting rod

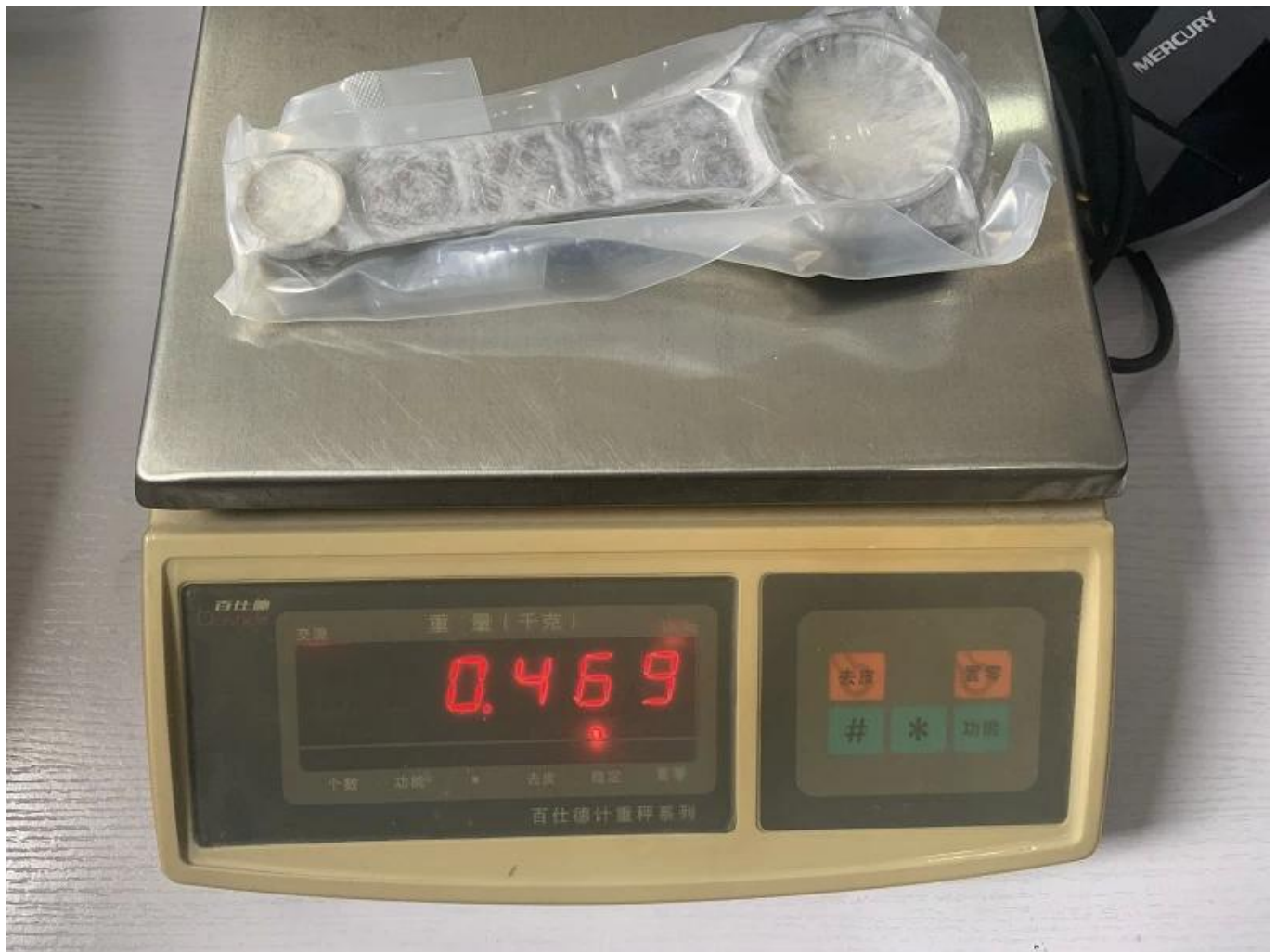
These Honda K24 152mm connecting rods are manufactured from high tensile **4340 forged steel /40CrNiMoA/EN24** material: Per rod featured with straight H-beam design for weight saving and high strength, Heat-treated with temperature , the HRC rate 34-38. All these rods are magnafluxed , tempering, and shot-peened for increased fatigue life. 100% finish by advanced CNC machine, so the surface looks very smooth and beautiful, there is a short article that you could explore about "[How to machine rods as a manufacturer](#)".

Honda / Acura K24 Forged 4340 steel conrods have two oil holes at their pin ends, it provides additional lubrication and cooling, which makes rods become more stronger and durable. In addition, bronze wrist pin

bushings are fitted to each rod to increase wear resistance. What's more , each k24 lightweight rods are adequately chamfered with adequate clearance, on the edge facing the crank throw to accommodate large journal fillet radii, to obtain proper lubrication. If you want one piece sample to check finish or quality first, please leave an message to us:[marketing@hurricane-rod.com.cn](mailto:marketing@hurricane-rod.com.cn), this is our pleasure to provide, and you only pay freight for them.

Hurricane Lightweight Honda K24 Performance

Conrods is only 469 gram per piece, without bolts. Also our H beam Connecting rods for Acura & Honda K24 Engines could reach 600 horsepower.



Featured products for Acura & Honda k24 rods for sale:

1. [Honda / Acura K Series \(K20 & K24\) Connecting Rods - Custom conneting rods](#)
2. [Honda / Acura K Series K24 TSX K24A K24Z Element CRV CONNECTING RODS](#)

**Honda Race Car Picture**

