

Brand: Hurricane
Engine: HONDA / ACURA S2000 F22C
Part Type: Connecting Rods
Center to Center Length: 149.68mm/5.893"
Big End Bore Diameter: 51mm/2.008"
Big End Width: 23.85mm/0.939"
Small End Bore Diameter: 23mm /0.906"
Small End Width: 22mm/0.866"
Beam Style: X-beam
Connecting Rod Bolt Diameter: 3/8 "
Approximate Connecting Rod Weight: 615g per piece
Advertised Horsepower Rating: 900hp
Quantity: Sold as 4pieces /set
Material: Forged 4340 steel
Connecting Rod Finish: Shot-peened, Polished
Pin: Bronze wrist pin bushings
Wrist Pin Style: Floating
Cap Retention Style: Cap screw
Weight Matched Set: Yes ,Balanced +/- 1g per set
Magnafluxed: Yes
Private Label: Yes, available
Custom design: Yes, accept

Honda S2000 F22C Rods Description

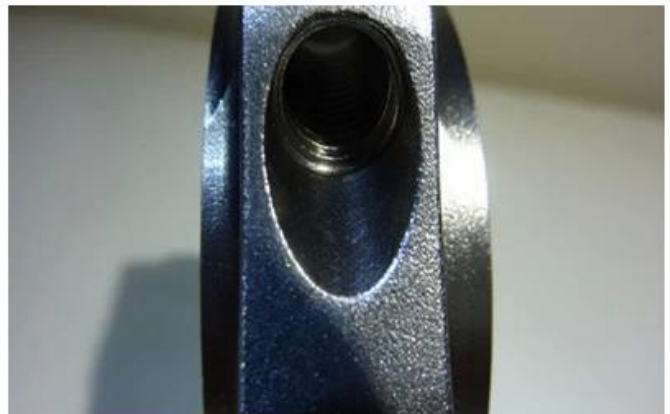
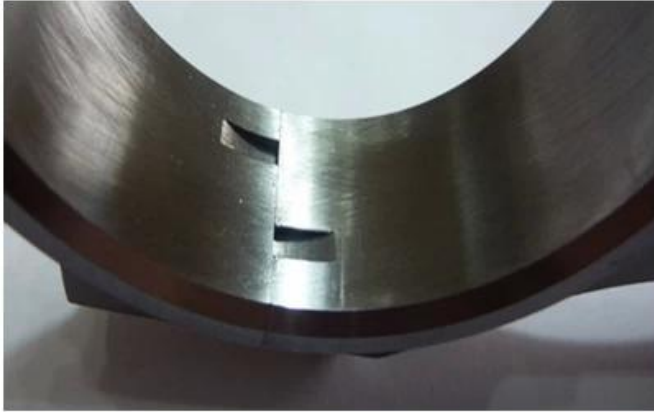
Hurricane is proud to introduce Honda Series Connecting Rods for your Honda's F22C, [Honda D16](#) , [Honda B18A/B](#) , [Honda K24](#) engines.

Hurricane has always carried a high level of quality throughout all of the parts we sell. Their new line of X-Beam Series connecting rods is a great option for those building sub-900whp engines for both street and track use. The Hurricane X Beam Rod is a fairly lightweight, aerodynamic rod for the mount of power it can handle without risk of failing. This rod is a favorite of many who are looking for a rod that will handle high horsepower figures at high rpm.

Hurricane X-beam forged connecting rods Features:

1. Smooth finish of BE BORE surface .it`s precision is within 0.01mm after honing. It is even used to be your mirror.
2. Big end surface effect. the surface is very smooth , the R part is mellow and full. It is hard to see the tool vestige.
3. shot-peening effect. we are strict to select steel shot. We only use the cleanest shot which has the most suitable size. The result is our rods`surface is very bright and smooth.
4. Bolt seat.you can see the roof `s arch is mellow and full. Only CNC can reach this degree.
5. The bolt hole and thread are made by CNC and Precise cutting-tool.You can't find any tool vestige even on the bolt hole surface.
6. Big end arch part surface is also very smooth and we make the shoulder into arc shaped.

7. X-beam effect. as a result of twice machining by CNC, it is very smooth. Below picture may help you get a close impression of the X-beam.
8. Pin end arch part surface is very smooth, it is hard to see the tool vestige.
9. Cooper bush of the pin end. It is smooth and beautiful.
10. Generally, 2.5mm-3mm diameter oil hole on the pin end.



Honda F series connecting rods:

1. [Set of 4, Honda F20C S2000 6.023" I-Beam Connecting Rods](#)
2. [4340 Chrome Moly Connecting Rods for HONDA F20C S2000 ,Set of 4](#)
3. [Hurricane Speed & Performance -4340 Chrome-Moly F20C/S2000 X-beam Connecting Rods](#)
4. [Honda F20B X beam Forged Steel 145mm connecting rods](#)
5. [Set of 4, I beam Connecting rods For Honda F20B](#)
6. [H-beam Honda F20B Engine Connecting Rods Set , 5.709 length 145mm conrod](#)
7. [Hurricane 4340 Chrome Moly Connecting Rods for HONDA F22C, 2.2L S2000, Set of 4](#)

8. [4340 H-beam Honda F22/H23 connecting rods with 22mm pin, set of 4](#)
9. [Honda F22C I-beam Racing Connecting Rods](#)

Honda S2000 Race Car



Note: Picture from Pinterest.