

Brand: Hurricane
Engine: Honda F20B
Part Type: Connecting Rods
Center to Center Length: 145mm/5.709"
Big End Bore Diameter: 48.00mm/1.890"
Big End Width: 23.75mm/0.935"
Small End Bore Diameter: 22.015mm /0.867"
Small End Width: 22.00mm/0.866"
Beam Style: H-beam
Connecting Rod Bolt Diameter: 3/8"
Approximate Connecting Rod Weight: 490g/piece
Advertised Horsepower Rating: 550hp
Quantity: Sold as 4 pieces /set
Material: Forged 4340 steel
Connecting Rod Finish: Shot-peened, Polished
Pin: Bronze wrist pin bushings
Wrist Pin Style: Floating
Cap Retention Style: Cap screw
Weight Matched Set: Yes ,Balanced +/- 1g
Magnafluxed: Yes
Private Label: Yes ,available
Custom design: Yes, accept

High Quality Connecting Rod for Honda F20B Description

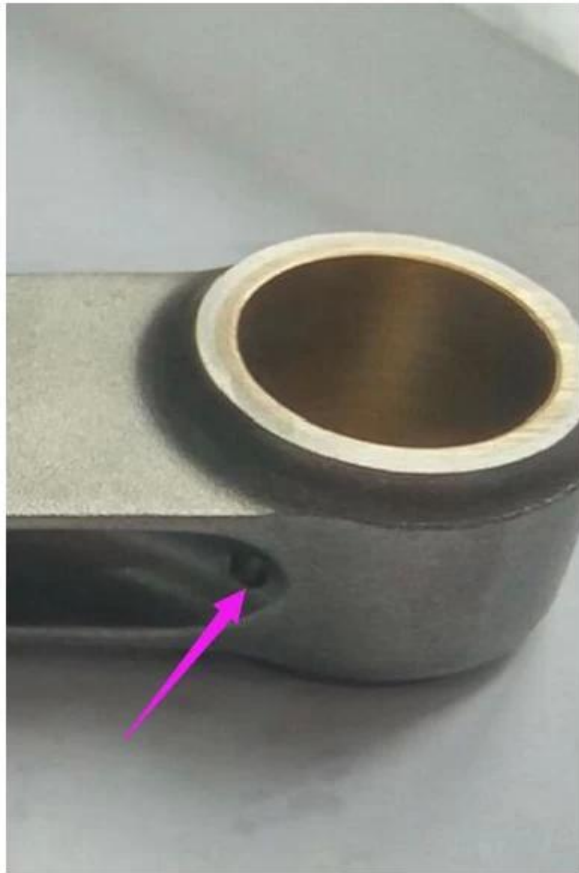
These H-beam 4340 forged connecting rod set for the Honda F20b engine, each rod bronze bushed for floating piston pin, dimensionally inspected , magnaflux inspected and 100% machined to ensure enough strength and extreme reliability. Every piece of honda JDM f20b connecting rods are fully polished and shot peened to reduce stress for increased fatigue life .



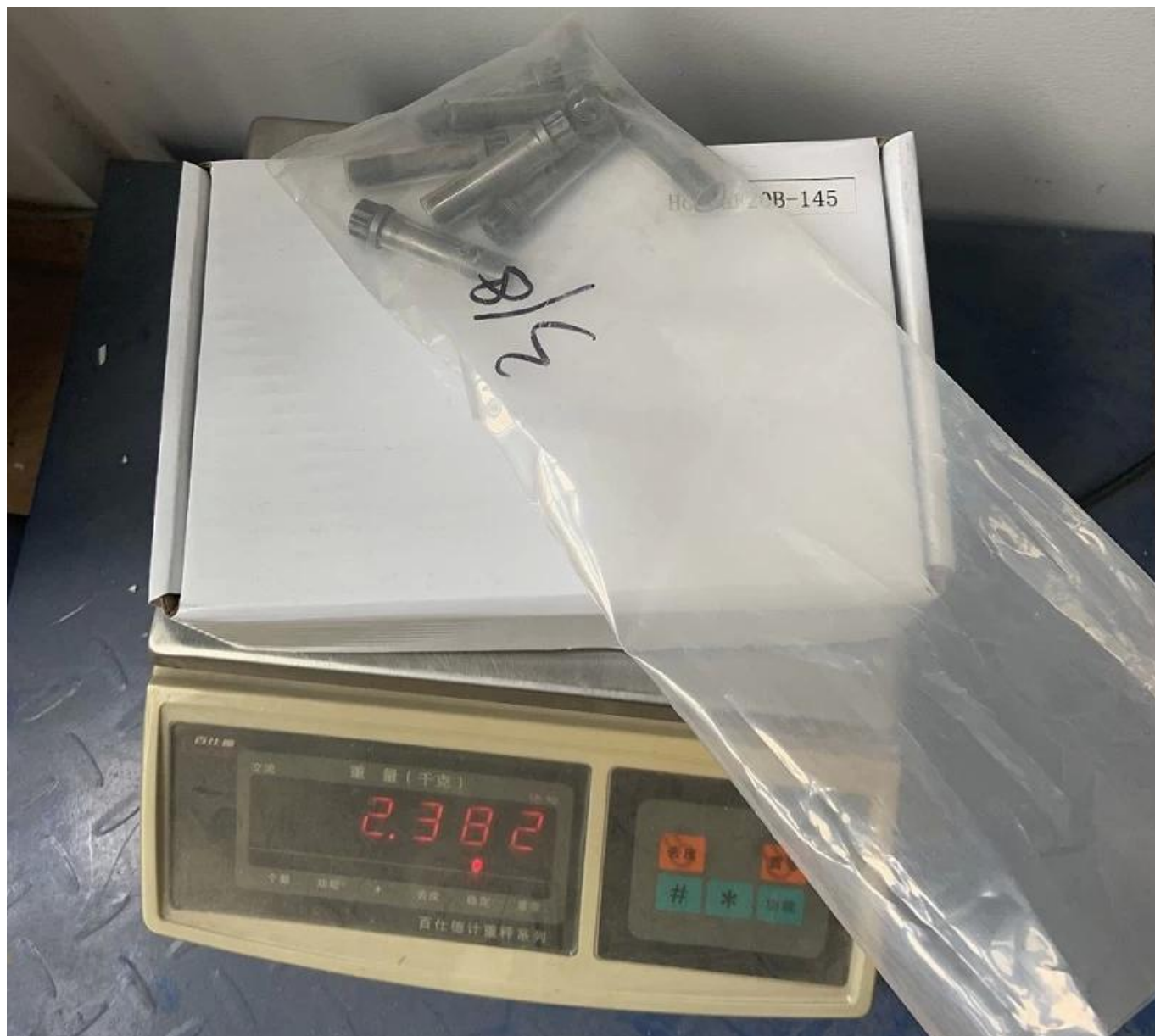
This is our H beam F20B connecting rods after CNC milled.



This is hurricane H beam conrods after shot peening.



Two small oil holes drilled in the small end beam cut for well lubrication.



Hurricane final finished Honda F20B 145mm H beam connecting rods set with 8 pieces hurricane performance replacement 3/8-1.6 inch bolts weight is 2.4kg. If you need our bolts, please check: [Hurricane Performance Replacement Connecting rods bolts Size: 3/8 x 1.600" inch](#)

Hurricane factory have over 20years experience on designning and manufacturing performance connecting rods, especially for Honda B-series, D-series, F-series, H-series, K-series and more. our engineers have independent ability to make various design for connecting rods , welcome to [contact](#) us for your custom needs if necessary , Hurricane can produce perfect rods for your high performance engine at reasonable price .