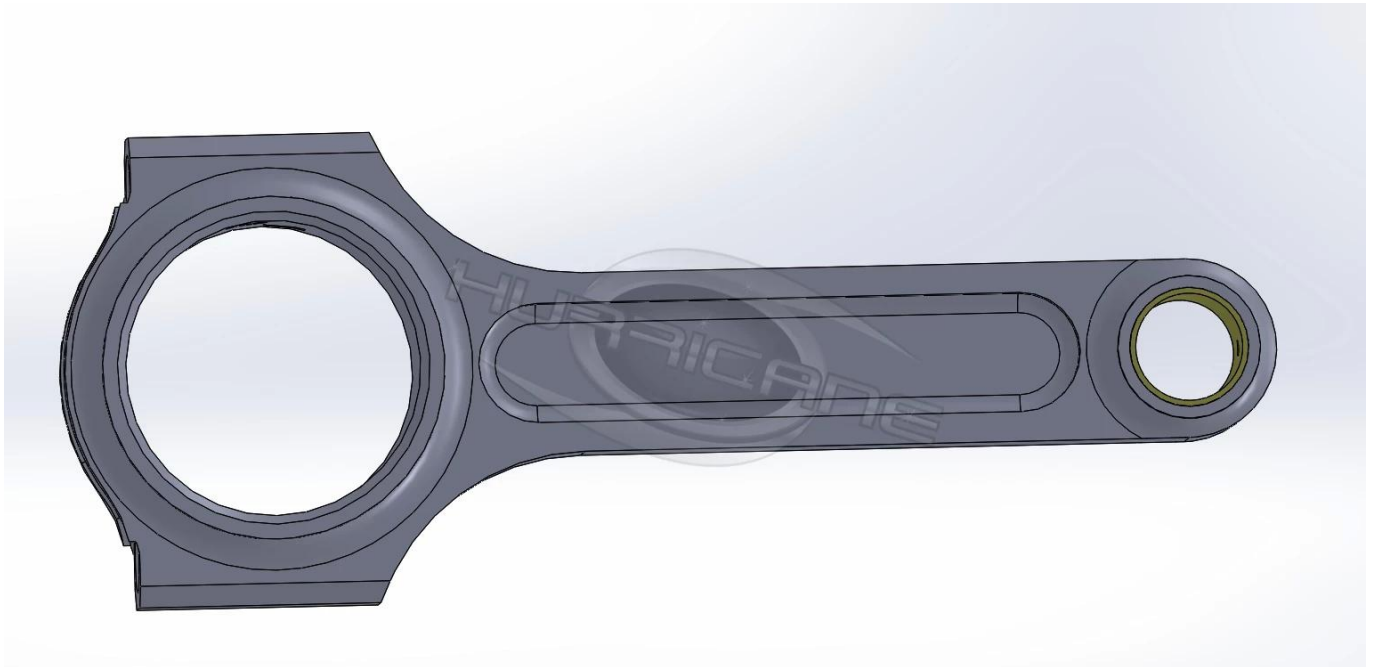


Brand: Hurricane
Engine: VW 1.8L
Part Type: Connecting Rods
Center to Center Length: 147.68mm/5.814"
Big End Bore Diameter: 50.60mm/1.992"
Big End Width: 24.79mm/0.976"
Small End Bore Diameter: 20mm /0.787"
Small End Width: 24.79mm/0.976"
Beam Style: I-beam
Connecting Rod Bolt Diameter: 3/8"
Quantity :4pcs/set
Approximate Connecting Rod Weight: 560g/piece
Advertised Horsepower Rating: 750hp
Material: Forged 4340 steel
Connecting Rod Finish: Shot-peened, Polished
Pin: Bronze wrist pin bushings
Wrist Pin Style: Floating
Cap Retention Style: Cap screw
Weight Matched Set: Yes ,Balanced +/- 1g
Magnafluxed: Yes
Private Label: Yes ,available
Custom design: Yes, accept

These I-beam forged rods for high performance VW engines, sold as set of four pcs , recommended bolts torque of 75N*M , engineered for engines up to 750 HP . Each rod designed and inspected by 3D software before prodcuton to gurantee the rods can hold high strength .



Per rod is heat-treated with temperature 860°C~880°C, the HRC rate 34-38. Per rod had been magnafluxed and demagnetized , and fully shot-peened to finish the surface well . Per sets weight matched within 2gram, and fully removed burrs before shipment .



Hurricane also supply different beam style connecting rods for VW performance engines , include H-beam, X-beam , A-beam and so on, you can view some details in here : <https://www.hurricanerods.com/news/Hurricane-Connecting-Rod-Features-Various-Beam-Designs.html>. Also , we can custom connecting rods as your specified specs and design , welcome to [contact](#) us if you want to learn know more details .