

Brand: Hurricane*
Engine: Chrysler Mopar ,440
Part Type: Connecting Rods
Center to Center Length: 171.7mm/6.760"
Big End Bore Diameter: 60.30mm/2.374"
Big End Width: 25.58mm/1.007"
Small End Bore Diameter: 25.146mm /0.990"
Small End Width: 25.58mm/1.007"
Beam Style: H-beam
Connecting Rod Bolt Diameter: 7/16"
Advertised Horsepower Rating: 1200hp
Quantity: Sold as 8 pieces /set
Material: Forged 4340 steel
Connecting Rod Finish: Shot-peened, Polished
Pin: Bronze wrist pin bushings
Wrist Pin Style: Floating
Cap Retention Style: Cap screw
Weight Matched Set: Yes ,Balanced +/- 1g
Magnafluxed: Yes
Private Label: Yes ,available
Custom design: Yes, accept

These H-beam connecting rods are designed for Chrysler Mopar 440 engines, per rod built from high quality 4340 steel material .





Each rods are finish-honed by SUNNEN equipment with high tolerance standrad at [Hurricane factory](#) ,polished and shot-peened to improve fatigue life, and featured with bronze bushings for floating pin . Those rods can hold approx 1200hp, so it will be a good choice for your high performance appli cations at same price range . More importantly , they are available with [ARP 8740, ARP 2000 and ARP L19](#) rod bolts to meet higher strength chrysler applications .



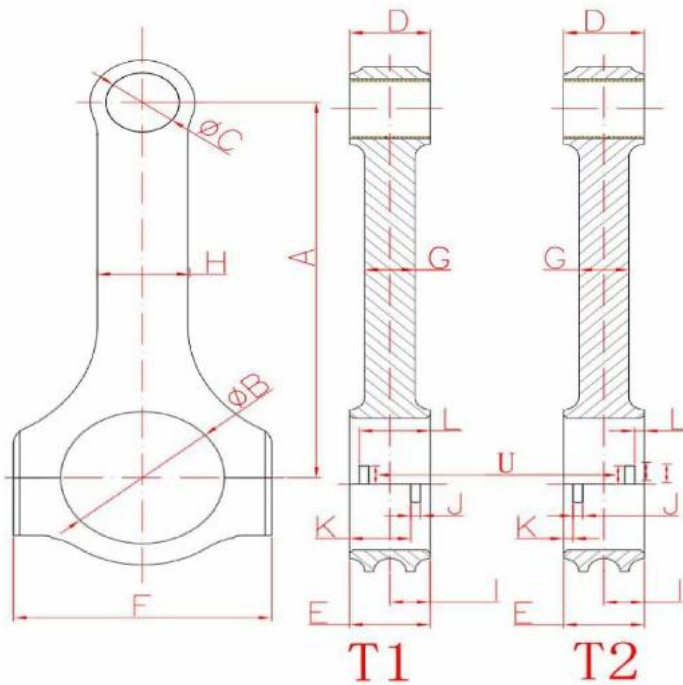
Hurricane offer custom service , custom connecting rods can be made as your specified needs . As a connecting rods leading manufacturer with 20+ years experience in China , our engineers team hav e the ability and confidence to design and make perfect rods for your performance engines . Here ar

See our custom connecting rods specs sheet , welcome to [contact](#) us if any needs for racing connecting rods .



Hurricane Speed & Performance - Custom Connecting Rod Form

SPECIF UNITS: _____ MM OR IN



- | | |
|-----------------------------|-------------------------|
| A. _____ | B. _____ |
| Center to Center length/中心距 | Big End Bore/大孔 |
| C. _____ | D. _____ |
| Pin End Bore/小孔 | Pin End Width/小端厚度 |
| E. _____ | F. _____ |
| Big End Width/大端厚度 | Overall BE Width/肩宽 |
| G. _____ | H. _____ |
| Beam Thickness/杆厚 | Beam Width/杆宽 |
| I. _____ | S. _____ |
| BE Offset | T1 Or T2 反瓦/正瓦 |
| K. _____ | J. _____ |
| Tang Position | Tang Width/瓦槽宽度 |
| V. _____ | L. _____ |
| Tang Depth/瓦槽深度 | Tang Position |
| U. _____ | M. _____ |
| Tang Length/瓦槽长度 | H-beam,X-beam,I-beam/设计 |
| O. _____ | N. _____ |
| Piece/Set 只/组 | Engine Model/发动机型号 |
| P. _____ | Q. _____ |
| Bolt Diameter(Inch)/螺栓规格 | Piece (Quantity)/数量 |
| R. _____ | |
| Bolt Length(Inch)/螺栓长度 | |

