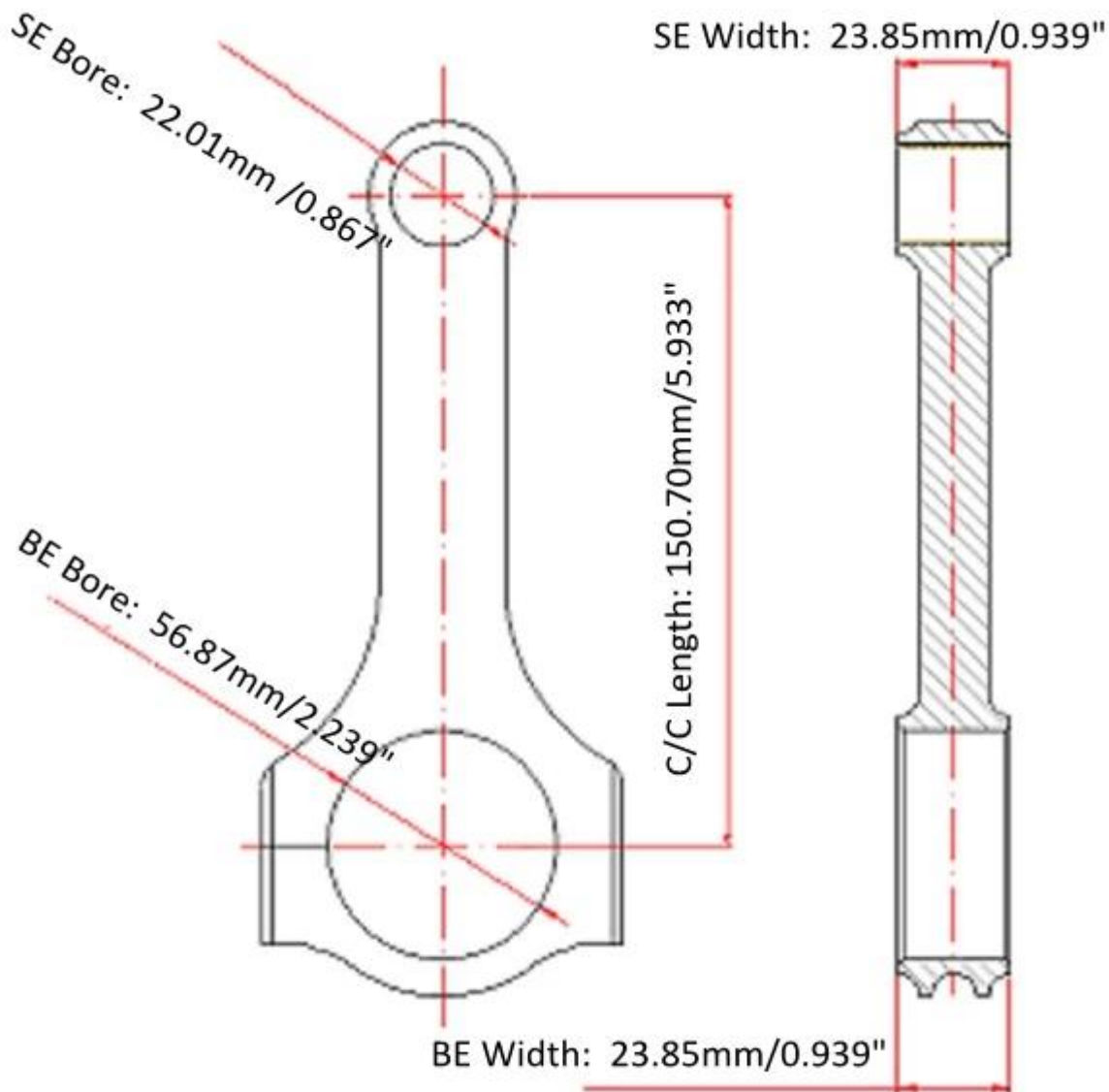


Brand: Hurricane
Engine: Ford 4.6L/5.0L
Part Type: Connecting Rods
Center to Center Length: 150.70mm/5.933"
Big End Bore Diameter: 56.87mm/2.239"
Big End Width: 23.85mm/0.939"
Small End Bore Diameter: 22.01mm /0.867"
Small End Width: 23.85mm/0.939"
Beam Style: H-beam
Connecting Rod Bolt Diameter: 3/8"
Approximate Connecting Rod Weight: 535g/piece
Advertised Horsepower Rating: 1000hp
Quantity: Sold as 8 pieces /set
Material: Forged 4340 steel
Connecting Rod Finish: Shot-peened, Polished
Pin: Bronze wrist pin bushings
Wrist Pin Style: Floating
Cap Retention Style: Cap screw
Weight Matched Set: Yes ,Balanced +/- 1g
Magnafluxed: Yes
Private Label: Yes ,available
Custom design: Yes, accept

Ford Mustang 4.6 L / 5.0 L Coyote Connecting Rods Main Drawing



Hurricane Ford 4.6L engine H-Beam 5.933" Connecting Rods are manufactured from [Forged 4340 steel](#) Connecting Rod Material, designed and produced for Ford 4.6L/5.0L Coyote applications, 100% CNC machined, stress relieved and magnafluxed, they support over 1000HP for the Ford racing engines .

Ford 4.6L and 5.0L Coyote Forged H-Beam Connecting Rod Set Features:

- Manufactured from 4340 forgings, chemical element:
 - Heat treated, stress relieved, shot peened and 100% magnafluxed
 - Weight matched sets +/- 1 grams
 - Cap fasteners are premium 3/8" ARP 8740 or optional ARP 2000 cap screws
 - Horsepower range: 700 HP (ARP 8740), 750 HP (ARP 2000)
 - Install QAL10-3-1.5 Bushing, chemical element: Al 8.5~10.0%, Mn 1.0~2.0%, Fe 2.0~4.0%, Remain: Cu
- More Hurricane rods features, please kindly explore on [NEWS](#).



Hurricane factory offer both H beam and I beam design performance 5.933" connecting rods for Ford Coyote engine. **Featured product:** [I-beam connecting rods for Ford 4.6L/5.0L,5.933" length](#)

Ford Mustang GT Race Car Picture



Any question or any special requirements, please [contact our skilled staffs](#) for help. You will get replied within 24 hours.