

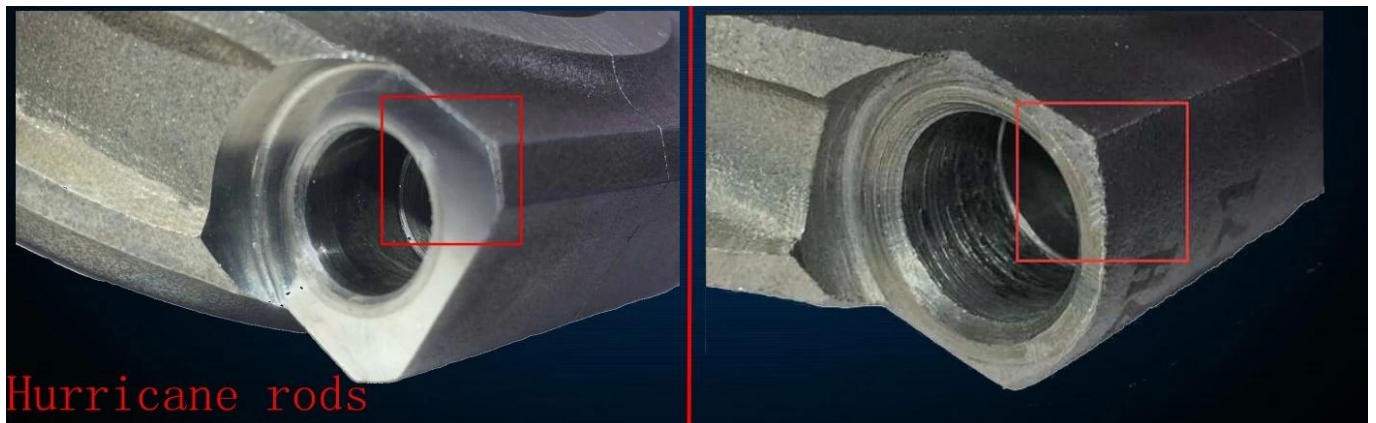
Brand: Hurricane*
Engine: Chrysler Mopar Hemi 426
Part Type: Connecting Rods
Center to Center Length: 174.24mm/6.860"
Big End Bore Diameter: 60.33mm/2.375"
Big End Width: 25.58mm/1.007"
Small End Bore Diameter: 26.162mm /1.030"
Small End Width: 25.50mm/1.007"
Beam Style: H-beam
Connecting Rod Bolt Diameter: 7/16"
Advertised Horsepower Rating: 1200hp
Quantity: Sold as 8 pieces /set
Material: Forged 4340 steel
Connecting Rod Finish: Shot-peened, Polished
Pin: Bronze wrist pin bushings
Wrist Pin Style: Floating
Cap Retention Style: Cap screw
Weight Matched Set: Yes ,Balanced +/- 1g
Magnafluxed: Yes
Private Label: Yes ,available
Custom design: Yes, accept

These forged H-Beam connecting rod suit for high performance Chrysler Mopar Hemi 426 applications, engineered from high tensile **4340 steel material**. Bronze wrist pin bushings are fitted in each rod to increase wear resistance. All rods are heat-treated, X-rayed, sonic-tested, magnafluxed for high strength , all the rods are 100% CNC machined at Hurricane factory to meet high quality standard .

And at same price , compared to other rods sold in market , you can see clearly the Hurricane rods finished better .

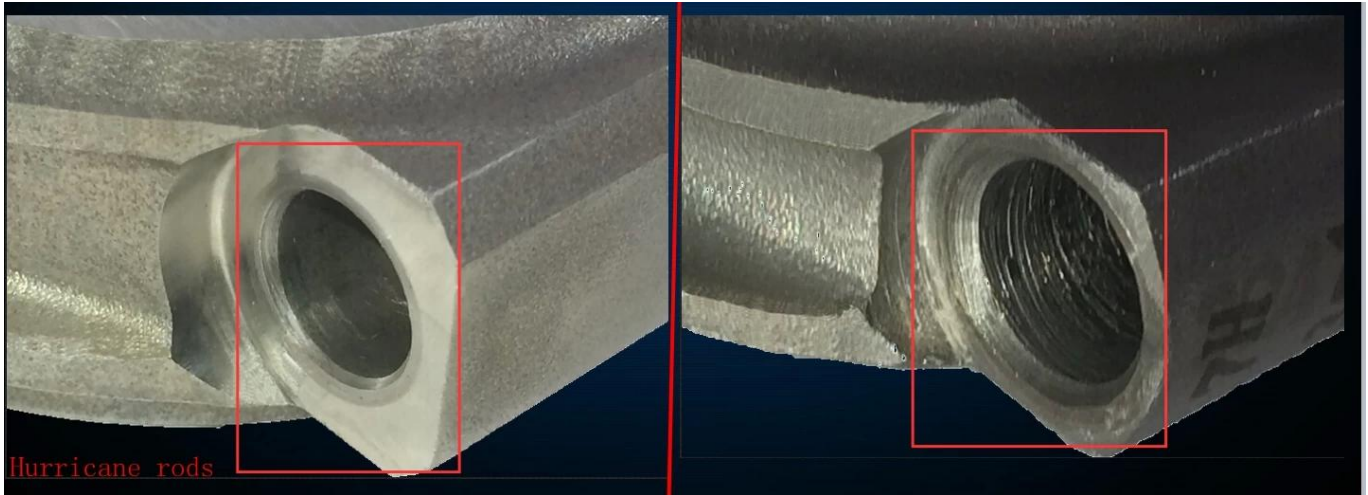
1. Compare- Shoulder Edges

Per Chrysler Mopar Hemi 426 H-beam connecting rod finished with 3x45° edges in the shoulder with CNC machine, then you can see all burrs removed fully (the left one) .



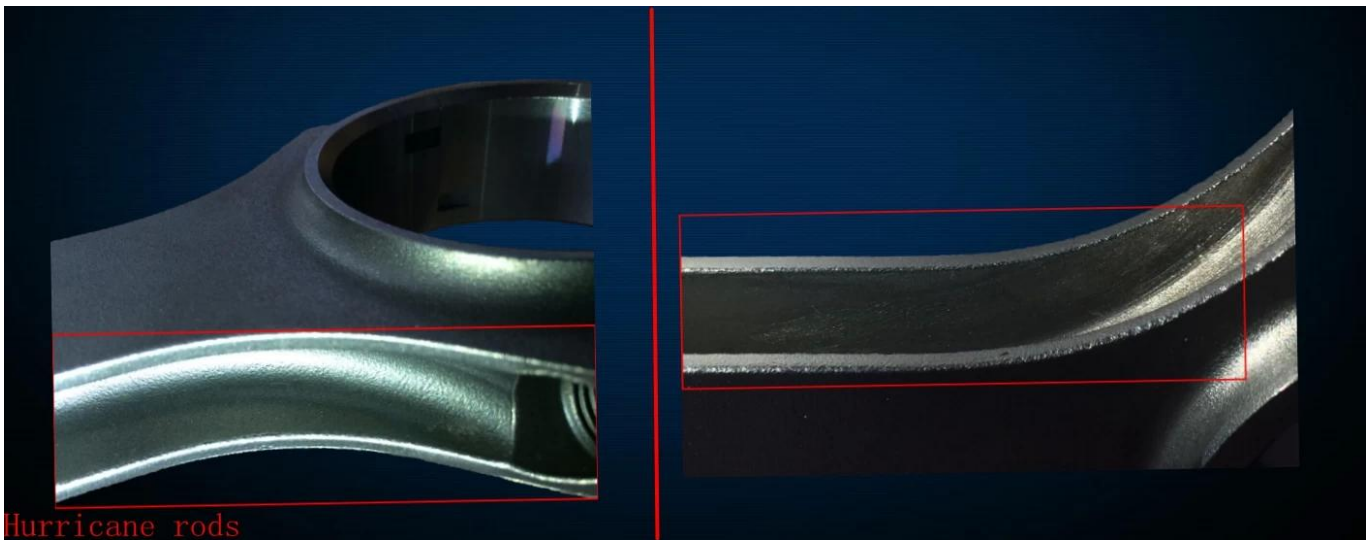
2. Compare-Bolt Seat

You can see the roof`s arch of Hurricane rods (the left one) is mellow and full , then it will provide more strength .



3. Compare-Beam Cut

Hurricane rods (the left one) beam is very smooth and is hard to see the tool vestige.



Hurricane also supply forges rods for different Chrysler engines ,includes:

[Chrysler 6.4L/392 HEMI](#)

[CHRYSLER 5.9L/360 5.6L/340](#)

[Chrysler BIG BLOCK 7.2L/440](#)

Chrysler Connecting Rods Picture :



Welcome to [contact.us](https://www.contact.us) for more details if any interest .