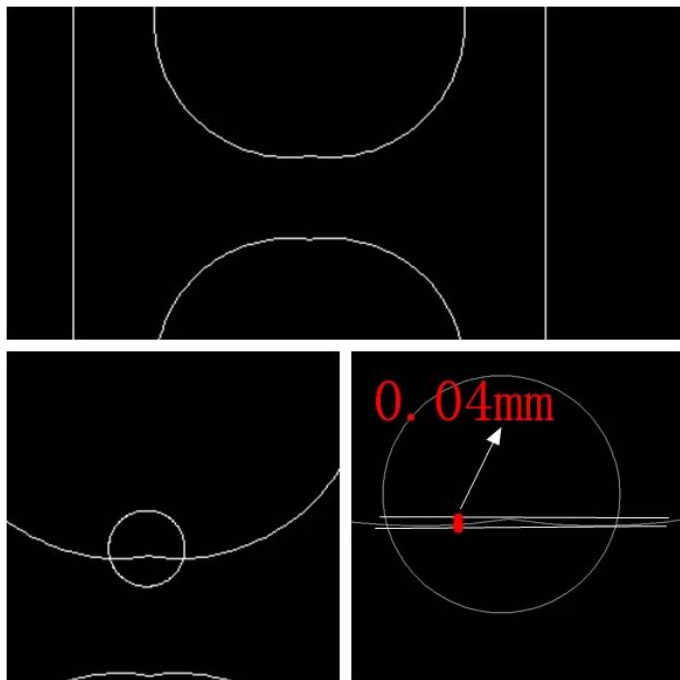
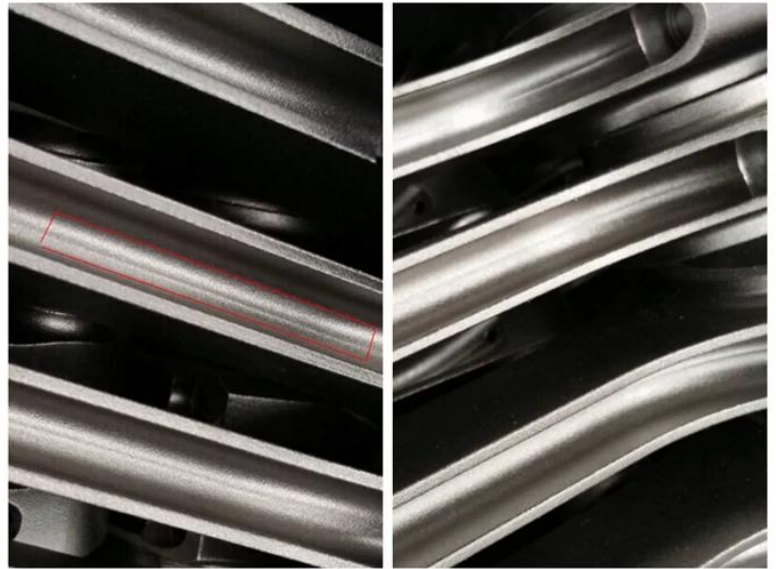
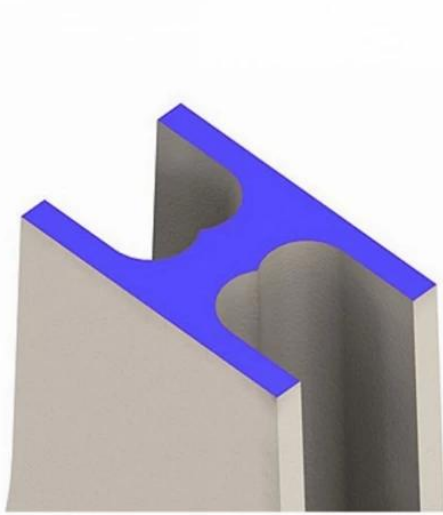


Brand: Hurricane  
Engine: Mitsubishi 4G63/4G64  
Part Type: Connecting Rods  
Center to Center Length: 150mm/5.906"  
Big End Bore Diameter: 48mm/1.890"  
Big End Width: 26.37mm/1.038"  
Small End Bore Diameter: 22mm /0.866"  
Small End Width: 22.86mm/0.900"  
Beam Style: H-beam  
Connecting Rod Bolt Diameter: 3/8"  
Approximate Connecting Rod Weight: 570g/piece  
Advertised Horsepower Rating: 750hp  
Quantity: Sold as 4 pieces /set  
Material: Forged 4340 steel  
Connecting Rod Finish: Shot-peened, Polished  
Pin: Bronze wrist pin bushings  
Wrist Pin Style: Floating  
Cap Retention Style: Cap screw  
Weight Matched Set: Yes ,Balanced +/- 1g  
Magnafluxed: Yes  
Private Label: Yes ,available  
Custom design: Yes, accept

#### 4G63 / 4G64 - ECONOMICAL "H" BEAM STEEL CONNECTING RODS

Hurricane is proud to introduce its all-new Alpha Series Connecting Rods for Mitubishi's 4G63 engines. With new process to machine beam, **the radius slot represents the well-known and durable standard Hurricane Speed and Performance H-Beam Rod design.**





Alpha Series Rods are forged from select 4340 chromoly steel and feature a straight H-beam design, resulting in the ultimate strength-to-weight ratio. [4340 chromoly](#) is one of the strongest materials available, however, not all 4340 chromoly is the same. As such, Hurricane relies on extensive material testing and works closely with its foundry to produce high-quality rods at an affordable price.



## Features rods

1. [Mitsubishi 4G63 H-Beam Connecting Rods \(Set of 4\) ,150mm C/C length , 22mm Pin](#)
2. [Forged 4340 Chromoly Steel I Beam Connecting Rods For Mitsubishi 4g63](#)
3. [88MM STROKE Mitsubishi 4G63 Billet crankshaft-Hurricane Speed&Performance](#)