

Brand: Hurricane\*  
Engine: Nissan VQ35DE  
Part Type: Connecting Rods  
Center to Center Length: 144.2mm/5.677"  
Big End Bore Diameter: 55.00mm/2.165"  
Big End Width: 20.80mm/0.819"  
Small End Bore Diameter: 22.00mm /0.866"  
Small End Width: 21.80mm/0.858"  
Beam Style: H-beam  
Connecting Rod Bolt Diameter: 3/8"  
Approximate Connecting Rod Weight: 640g/piece  
Advertised Horsepower Rating: 900hp  
Quantity: Sold as 6 pieces /set  
Material: Forged 4340 steel  
Connecting Rod Finish: Shot-peened, Polished  
Pin: Bronze wrist pin bushings  
Wrist Pin Style: Floating  
Cap Retention Style: Cap screw  
Weight Matched Set: Yes ,Balanced +/- 1g  
Magnafluxed: Yes  
Private Label: Yes ,available  
Custom design: Yes, accept

## **H-Beam Rods For NISSAN INFINITE VQ35**

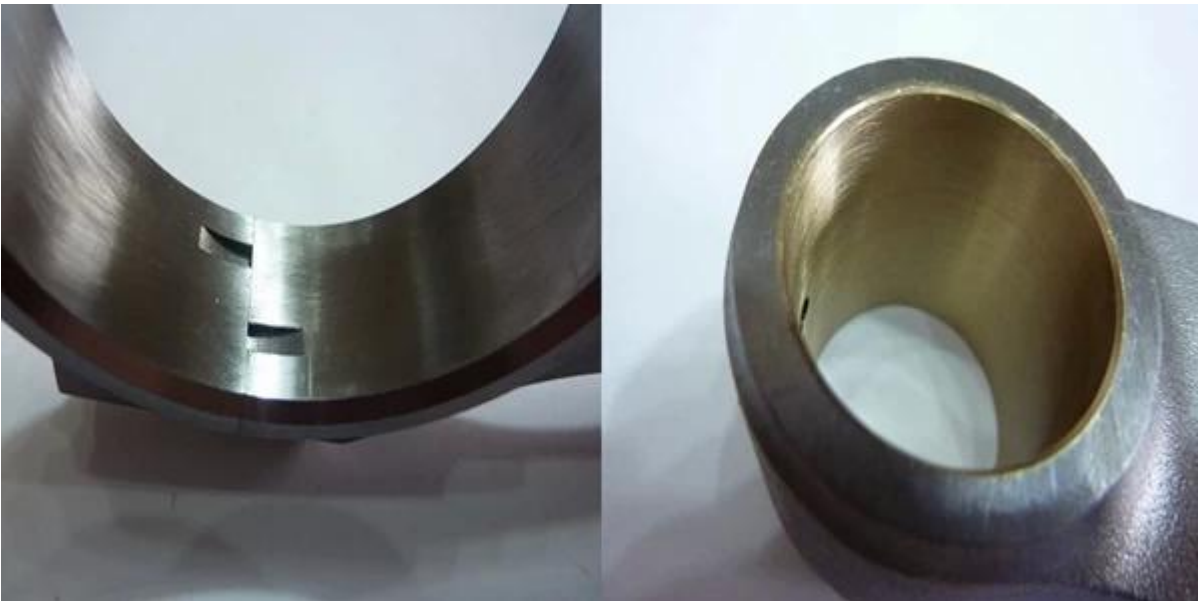
Nissan VQ35DE connecting rods engineered from high tensile [forged 4340 steel](#), heat treated with 34-38HRC to provide improved strength, shot peened to increases fatigue life, all these connecting rods are bronzed bushings for floating piston wrist pins. And they fit for street, high performance and racing Nissan VQ35DE engines, support up to 900 HP.

H-beam Nissan VQ35 RODS design features:

1. Forged 4340 steel(40CrNiMoA)



2. Honed bid end bore and small end bore with bushing



3. H-beam



If you are interested more features, please kindly explore: [NEWS](#)