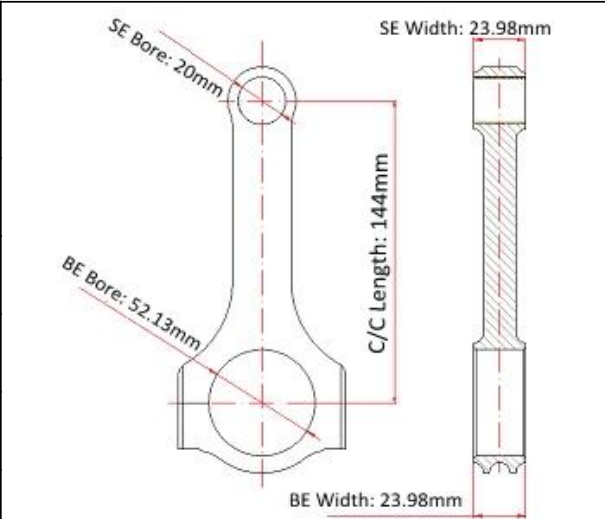


## Opel 2.4L performance forged Conrods Main Sizes

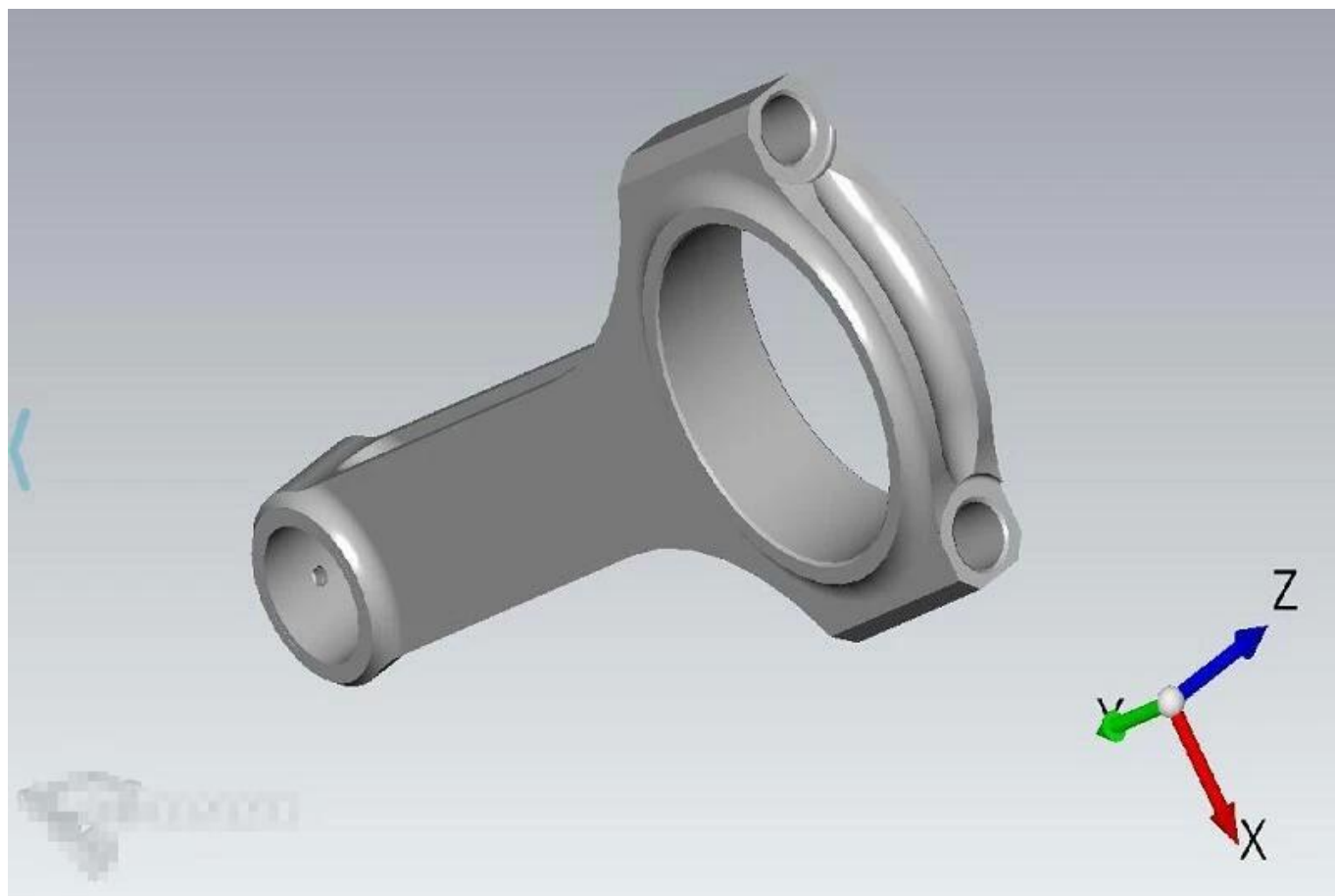
Brand: Hurricane*	
Center to Center Length: 144mm/5.670"	
Big End Bore Diameter: 52.13mm/2.052"	
Big End Width: 23.98mm/0.944"	
Small End Bore Diameter: 20mm/0.787"	
Small End Width: 23.98mm/0.944"	
Beam Style: H-beam	

## H beam steel connecting rods 144mm Features

Connecting Rod Bolt Diameter	3/8"
Approximate Connecting Rod Weight	XXXg
Advertised Horsepower Rating	550hp
Quantity	Sold as 4 pieces /set
Material	<a href="#">Forged 4340 steel</a>
Connecting Rod Finish	Shot-peened, Polished
Pin	Bronze wrist pin bushings
Wrist Pin Style	Floating
Cap Retention Style	Cap screw
Weight Matched Set	Yes ,Balanced +/- 1g
Magnafluxed	Yes
Private Label	Yes ,available
Custom design	Yes, accept

## Opel 2.4L 144mm h beam conrods Description

Hurricane Opel 2.4L performance forged conrods are engineered from high tensile 4340 forged steel. H-beam connecting rods for Opel 2.4L are Shot peened for improved fatigue life, and Shot peened for relieve stress. 3D software re-designed critical C-bore area, special CNC machining ensure smooth connection and free of sharp edge, significantly improved strength. The Opel 2.4L 144mm h beam conrods could reach around 550 horsepower and Suitable for high-performance street.



you can click our [Opel/Vauxhall Rods Catalog](#) to view more Hurricane Opel h beam connecting rods.

Hurricane also offer H beam steel connecting rods 144mm for VW and BMW engine models, such as:

- #1, [Hurricanerods.com: VW Audi H-Beam Custom Connecting Rods for 1.9L TDI 144mm](#)
- #2, [BMW M5/M6 S38B36 3.5L 144mm H-Beam Connecting Rods, Forged Steel Conrods](#)
- #3, [Forged Steel Connecting rod set for BMW M5/M6 S-88, rod length 144mm](#)
- #4, [H-Beam Connecting Rod for BMW E30 M3 S14 Engine 144mm Length 2.0 2.3L](#)
- #5, [Audi/VW 1.8T H-beam rods,144mm rod length,20mm pin end](#)
- #6, [4pcs Hurricane 144mm Audi/VW 1.8T Connecting Rods](#)

## H-beam connecting rods for Opel 2.4L FAQs

Q: What is the difference between Hurricane race specs connecting rod bolt and Original ARP bolt?

A: ARP8740 bolt	180,000PSI(YIELD STRENGTH)	200,000PSI(TENSILE STRENGTH)
Hurricane COPY ARP2000 3/8 bolt		211,829PSI(TENSILE STRENGTH)
ARP 2000 bolt	200,000PSI(YIELD STRENGTH)	220,000PSI(TENSILE STRENGTH)
ARP L19 bolt	220-230,000PSI(YIELD STRENGTH)	260,000PSI(TENSILE STRENGTH)
CUSTOM AGE 625+ bolt	235-255,000PSI(YIELD STRENGTH)	260,000 PSI(TENSILE STRENGTH)
ARP AERMET bolt	260-280,000PSI(YIELD STRENGTH)	290-310,000PSI(TENSILE STRENGTH)

You can check this News link to get more information: [Hurricane Connecting Rod Bolt Information](#)

Q: What is the bolt torque required on rods?

A: Copy ARP2000 5/16-1.500" 45N\*m  
Copy ARP2000 3/8 -1.600" 75N\*m  
Copy ARP2000 7/16-1.600" 95N\*m

Q: What's your connecting rod balance weight?

A: Balance weight +/-1g

## Opel Race Car Picture Share

