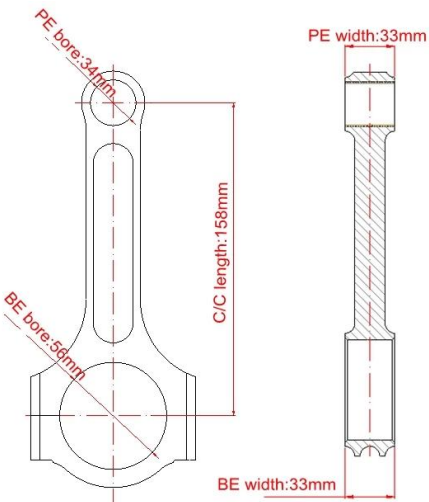


ISUZU Diesel Engine 4JJ1 Connecting Rods Main Sizes

Brand: Hurricane	
Center to Center Length: 158mm/6.221"	
Big End Bore Diameter: 56.00mm/2.205"	
Big End Width: 33.00mm/1.299"	
Small End Bore Diameter: 34.00mm /1.339"	
Small End Width: 33.00mm/1.299"	
Beam Style: I beam	

isuzu dmax 4jj1 Connecting Rods More details

Connecting Rod Bolt Diameter	7/16"
Approximate Connecting Rod Weight	1116g/piece
Advertised Horsepower Rating	1000hp
Quantity	Sold as 4 pieces /set
Material	Forged 4340 steel
Connecting Rod Finish	Shot-peened, Polished
Pin	Bronze wrist pin bushings
Wrist Pin Style	Floating
Cap Retention Style	Cap screw
Weight Matched Set	Yes ,Balanced +/- 1g
Magnafluxed	Yes
Private Label	Yes ,available
Custom design	Yes, accept

isuzu 4jj1 engine rods features

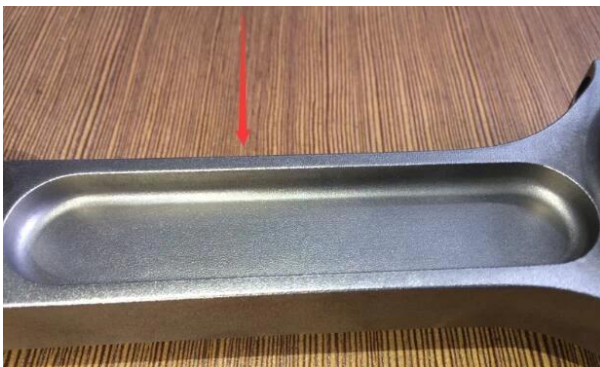
Hurricane Connecting Rods I beam Connecting Rod Taper Set of 4 for isuzu dmax 4jj1 engine for sale, **Hurricane Speed&Performance** Connecting Rods are manufactured from a proprietary forged 4340 steel, manufactured and forged to custom specifications. Through out the manufacturing process Hurricane rods are inspected and measured to uphold high quality standards. When you go with Hurricane Speed&Performance – you go with quality, best price and valid lead time. Rods sold as a COMPLETE

Matched Set.



1. I-beam

Just like in H-Beam tapered pin end, this feature allows weight saving and increased clearance when using boxed pistons.



2. Radial Groove Sleeve

Silicon aluminum bronze rod sleeves with radial groove for oil tank and best pin oiling.

3. TAPERED P.E

Tapered pin end feature allows weight saving and increased clearance when using boxed pistons.



Besides I beam performance isuzu dmax rods, [4340 Chrome Moly H-beam Connecting Rods for GM ISUZU 4JJ1 3.0L](#) can be provided for you also.

Con Rod produce with Fully CNC Machine



These machine mill, grind and drill on the connecting rod. Most factories used to machine with worker, which was a time consuming process. In order to reduce the time and improve rods quality, at present all rods machined with full CNC MACHINE.

On Youtube, you can see us "How to machine rods as a manufacturer". Link:

<https://www.youtube.com/watch?v=Xb6bSVAMHzI&t=57s>

And If possible, welcome you to here at any time, then you would see all like Youtube show you.

