

Brand: Hurricane
Engine: BMW M20
Part Type: Connecting Rods
Center to Center Length: 130mm/5.118"
Big End Bore Diameter: 48.00mm/1.890"
Big End Width: 21.87mm/0.861"
Small End Bore Diameter: 22.012mm /0.867"
Small End Width: 21.87mm/0.861"
Beam Style: H-beam
Connecting Rod Bolt Diameter: 3/8"
Approximate Connecting Rod Weight: 498 gram per piece without bolts
Advertised Horsepower Rating: 900hp
Quantity: Sold as 6 pieces per set
Material: Forged 4340 steel
Connecting Rod Finish: Shot-peened, Polished
Pin: Bronze wrist pin bushings
Wrist Pin Style: Floating
Cap Retention Style: Cap screw
Weight Matched Set: Yes, Balanced +/- 1g
Magnafluxed: Yes
Private Label: Yes ,available
Custom design: Yes, accept

BMW M20 6cyl Forged H-beam connecting rod Description

- 1).Forged from quality **4340 (EN24) steel** material
- 2).Heat treated to HRC 34-38
- 3).Polished and Shot peened for high fatigue strength
- 4).Per rod's small ends bushed for a fully floating pin
- 5). Designed and Manufactured for high performance BMW engines which rate up to 900HP .



- 6). H-Beam 130mm Connecting Rods for BMW M20 Engines are fully inspected and then packaged in 6 pcs per set, balance weighted in +/- 1 gram per set.



BMW M20 H-Beam Connecting Rods (6 PCS) will be packaged well in carton if air-express used .



Except BMW M20 H-Beam Connecting Rods 130mm Rod Length, Hurricane factory also supply forged 4340 connecting rods BMW M20 in 135mm and 140mm length. If you are looking for high performance forged conrods without breaking your budget, please feel free **contact us** for your needs . Also , we can custom the rods as your specified specs or design , welcome to contact us if any interest ,the Steps Of Custom Conrods as below :

- 1) received the drawing or sample , then we make quote detail
- 2) if you agree our quote , then we design drawing

3) each other confirm the drawing and deal detail

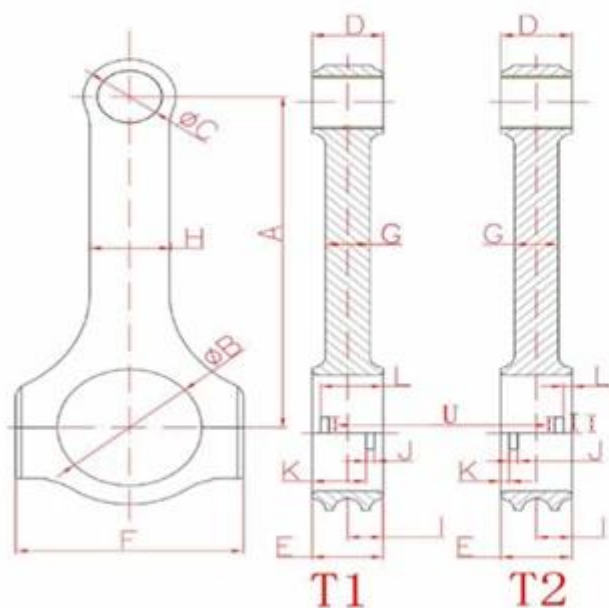
4) all confirm finished , 30% deposit required , then we make sample for you to test if necessary

5) balance before shipping , then we arrange shipping by your forwarder or our forwarder in time once received payment .



Hurricane Speed & Performance - Custom Connecting Rod Form

SPECIEF UNITS: _____ MM OR IN



A. _____	B. _____
Center to Center length/中心距	Big End Bore/大孔
C. _____	D. _____
Pin End Bore/小孔	Pin End Width/小轴厚度
E. _____	F. _____
Big End Width/大轴厚度	Overall BE Width/肩宽
G. _____	H. _____
Beam Thickness/杆厚	Beam Width/杆宽
I. _____	S. _____
BE Offset	T1 Or T2 反瓦/正瓦
K. _____	J. _____
Tang Position	Tang Width/瓦槽宽度
V. _____	L. _____
Tang Depth/瓦槽深度	Tang Position
U. _____	M. _____
Tang Length/瓦槽长度	H-beam,X-beam,I-beam/设计
O. _____	N. _____
Piece/Set 只/组	Engine Model/发动机型号
P. _____	Q. _____
Bolt Diameter(Inch)/螺栓规格	Piece (Quantity)/数量
R. _____	
Bolt Length(Inch)/螺栓长度	

