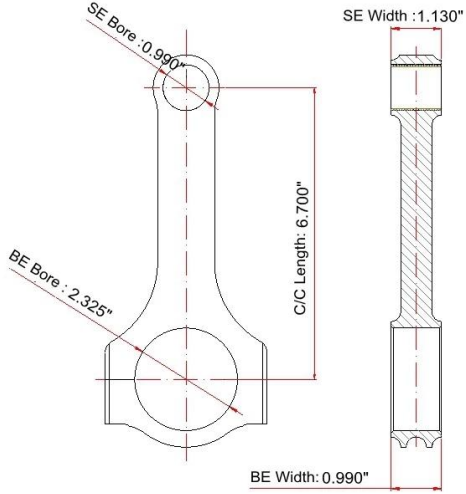


GM V8 performance H beam Connecting Rods Main Sizes

Brand: Hurricane	
Center to Center Length: 170.18mm/6.700"	
Big End Bore Diameter: 59.047mm /2.325"	
Big End Width: 25.17mm/0.990"	
Small End Bore Diameter: 25.146mm/0.990"	
Small End Width: 28.70mm/1.130"	
Beam Style: H-beam	

Chevy forged 4340 steel V8 BBC conrods Features

Connecting Rod Bolt Diameter	7/16"
Approximate Connecting Rod Weight	xxx
Advertised Horsepower Rating	1000hp
Quantity	Sold as 8 pieces /set
Material	Forged 4340 steel
Connecting Rod Finish	Shot-peened, Polished
Pin	Bronze wrist pin bushings
Wrist Pin Style	Floating
Cap Retention Style	Cap screw
Weight Matched Set	Yes, Balanced +/- 1g
Magnafluxed	Yes
Private Label	Yes, available
Custom design	Yes, accept

Chevy V8 BBC 6.700" H beam Conrods Description

GM BBC forged connecting rods made from high tensile chromoly 4340 steel forgings for super strength and durability, GM V8 performance H beam connecting rods are 100% CNC machine to meet high quality standard , engineered to H-beam to save more weights and designed to [round shoulder](#) for beautiful appearance , bronze wrist pin bushings are also fitted to each bbc rods for increased wear resistance, and are compatible with aftermarket forged pistons without additional machining. Chevy V8 BBC 6.700" H beam conrods could support 1000 horsepower.



Chevrolet(gm) H-beam Connecting Rod Picture



FAQs:

Q : Can you do [custom connecting rods](#) ?

A : Yes , there are some steps for your reference as below :

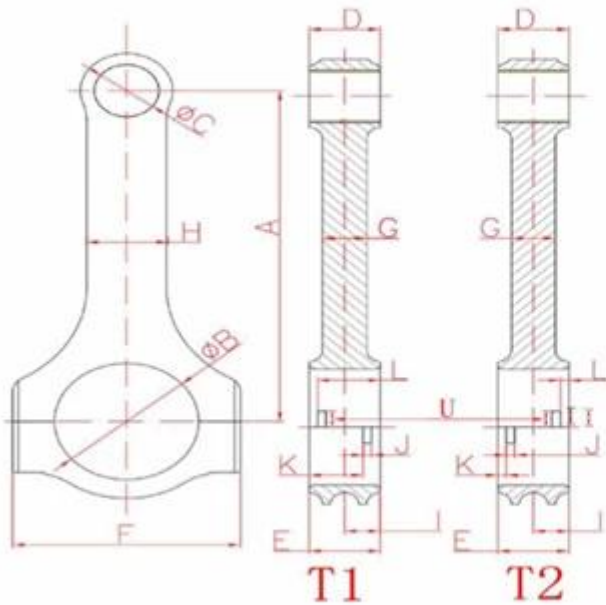
- 1)received the drawing or sample or the full specs of your rods(Custom Connecting Rod Form) , then we make quote detail
- 2) if you agree our quote , then we design drawing
- 3) Confirm the drawing and deal details
- 4) All confirm finished , 30% deposit required , then we make sample for you to test if necessary
- 5) balance before shipping , then we arrange shipping by your forwarder or our forwarder in time once received payment .

You also can [click here](#) to fill in all your rods sizes and send file back to us, after checked , accurate quotation will be sent to you by email within 3 days .



Hurricane Speed & Performance - Custom Connecting Rod Form

SPECIEF UNITS: _____ MM OR IN



A. _____	B. _____
Center to Center length/中心距	Big End Bore/大孔
C. _____	D. _____
Pin End Bore/小孔	Pin End Width/小端厚度
E. _____	F. _____
Big End Width/大端厚度	Overall BE Width/肩宽
G. _____	H. _____
Beam Thickness/杆厚	Beam Width/杆宽
I. _____	S. _____
BE Offset	T1 Or T2 反瓦/正瓦
K. _____	J. _____
Tang Position	Tang Width/瓦槽宽度
V. _____	L. _____
Tang Depth/瓦槽深度	Tang Position
U. _____	M. _____
Tang Length/瓦槽长度	H-beam,X-beam,I-beam/设计
O. _____	N. _____
Piece/Set 只/组	Engine Model/发动机型号
P. _____	Q. _____
Bolt Diameter(Inch)/螺栓规格	Piece (Quantity)/数量
R. _____	
Bolt Length(Inch)/螺栓长度	

